

prospectheightsparkdistrict



60,070 likes

prospectheightsparkdistrict Life Size Fun for any occasion!
At Prospect Heights any occasion is a picture perfect moment!
#LovePHparks #ProspectHeights 📷 📍 📸



prospectheightsparkdistrict



PROSPECT HEIGHTS PARK DISTRICT SUMMER 2024 PROGRAM GUIDE

TABLE OF CONTENTS

Active Adults	34
Athletics Youth	26-29
Banquets, Events & Weddings	33
Children's Programs	22-23
Creative Arts	22
Dance Star Studio	24-25
Dog Training Classes	23
Early Childhood Programs	10-11
Creative Kids Preschool	10
KinderSTOP	11
Fitness	36-37
Fitness Center Information	37
Memberships	37
Fitness Programs	36
Golf	30-32
Letter From Executive Director	Inside Cover, 1
Lions Park Pool	13-15
Swim Lessons	14
Typhoons Swim Team	15
Special Events	8-9
Summer Camp	16-21
General Information	2
Birthday Parties	35
Board of Commissioners	1
Calendar of Events	7
Facility Information	Inside Cover
Facility Rental Information	38
Information & Registration Form	2-5
Map & Park Amenities	40, Inside Back Cover
NWSRA	2
Parks Foundation	Inside Cover
Sponsorship	39
Staff Directory	1

FACILITY INFORMATION

GARY MORAVA RECREATION CENTER

110 W. Camp McDonald Road
Prospect Heights, IL 60070
Phone 847.394.2848
Fax 847.394.7799
Web phparks.org


OLD ORCHARD COUNTRY CLUB


700 W. Rand Road
Mount Prospect, IL 60056
Phone 847.255.2025
Web oldorchardcc.com


JOIN OUR MAILING LIST

Signup at phparks.org/enews to get news about active adults, golf or all Park District updates.

CONNECT WITH US!

 [prospectheightsparkdistrict](https://www.facebook.com/prospectheightsparkdistrict)
[oldorchardcountryclub](https://www.facebook.com/oldorchardcountryclub)
[prospectheightsparkdistrictsstarstudio](https://www.facebook.com/prospectheightsparkdistrictsstarstudio)
[prospectheightsparkdistrictletsgo](https://www.facebook.com/prospectheightsparkdistrictletsgo)

 [prospectheightsparkdistrict](https://www.instagram.com/prospectheightsparkdistrict)
[phpdstarstudio](https://www.instagram.com/phpdstarstudio)

 [ProspectHtsPrks](https://twitter.com/ProspectHtsPrks)

 [phparks](https://www.tiktok.com/@phparks)



LETTER FROM THE EXECUTIVE DIRECTOR CHRISTINA FERRARO, CPRE



For more information
Contact Christina Ferraro
cferraro@phparks.org
847.666.4861

Summer is a busy season at the Prospect Heights Park District. Warm weather means swim team, golf, summer camp, pool, Block Party and more. We are fortunate to offer many programs and amenities throughout the Park District

Did you know that 50% of Park District residents have access to a park amenity within one-half mile from their home? With six pickleball courts, a sand volleyball court, three baseball fields, a driving range, seven playgrounds and more, there are many amenities in the community for individuals to stay active. And the Board and staff continue to evaluate the district's capital improvement plan to enhance the community's vitality and quality of life.

Participant feedback is always welcome to help evaluate our work and its impact on the community. In response to a request for more pickleball courts within park district boundaries, a feasibility study will begin to consider where

PARK BOARD OF COMMISSIONERS



Tim Jones
President



Ellen Avery
Vice President



Eric Kirste
Treasurer



Betty Cloud
Secretary



Steve Messer
Commissioner



Karl Jackson
Commissioner



Paul Fries
Commissioner



BOARD MEETINGS

All residents are welcome to attend our Board Meetings, held the fourth Tuesday of each month at 7:00pm in the Gary Morava Recreation Center.

GMRC FACILITY HOURS	
Monday-Thursday	6:00A-9:00P
Friday*	6:00A-6:00P
Saturday	8:00A-5:00P
Sunday	8:00A-5:00P
*Fridays open until 7:00P June 7-August 9	
GMRC FRONT DESK HOURS	
Monday-Thursday	7:30A-9:00P
Friday*	7:30A-6:00P
Saturday	8:00A-5:00P
Sunday	9:00A-5:00P
*Fridays open until 7:00P June 7-August 9	
GMRC HOLIDAY HOURS	
Sun, March 31	Closed Easter
Mon, May 27	Closed Memorial Day
Thurs, July 4	Open Noon - 5:00P
Mon, September 2	Closed Labor Day

courts could go, how much they would cost and how to address the courts in Lions Park. More planning will begin to address the current ADA Transition. This is a plan for removal of physical barriers to accessibility in parks and facilities for people with disabilities. The 2011 plan will be updated periodically until the inventory of all accessibility barriers is eliminated. Some of you may have seen the improvements inside the Gary Morava Recreation Center with lighter colored bricks, new carpet, furniture, and monitors throughout the building. Staff are collecting bids to resurface the gymnasium wood floor now. These are a few ways we are responding to participant feedback about programs and facilities.

Wedgewood Park renovations are scheduled to be completed this year with the OSLAD grant funding we received. We are excited to see the final look in the fall. We hope to see you at one of our parks or events, on the bike path or at the Old Orchard Country Club this summer.

PROSPECT HEIGHTS PARK DISTRICT

110 W. CAMP MCDONALD ROAD
PROSPECT HEIGHTS, IL 60070
PHONE 847.394.2848 | FAX 847.394.7799
WEB PHPARKS.ORG

ADMINISTRATIVE STAFF

Christina Ferraro, CPRE, Executive Director

cferraro@phparks.org | 847.666.4861

Edlyn Castil, Marketing & Communications Manager

ecastil@phparks.org | 847.666.4864

Mark Grassi | Superintendent of Parks & Facilities

mgrassi@phparks.org | 847.666.4867

Shawn Hughes, Superintendent of Finance, HR & IT

shughes@phparks.org | 847.666.4868

Andrea Mueller, Accounting Clerk

amueller@phparks.org | 224.248.9583

Catherine Croock, HR/Payroll Coordinator

croock@phparks.org | 224.248.9581

RECREATION STAFF

Ray Doerner, CPRP, Superintendent of Recreation

rdoerner@phparks.org | 847.666.4862

Laura Fudala, CPRP, Recreation Supervisor

lfudala@phparks.org | 847.666.4878

Marci Gliniski, CPRP, Recreation Supervisor

mgliniski@phparks.org | 847.666.4875

Pan Zervas, Recreation Supervisor

pzervas@phparks.org | 847-394-6376

Rita Nebel, Customer Experience Supervisor

rnebel@phparks.org | 224.248.9580

OLD ORCHARD COUNTRY CLUB

700 W. RAND ROAD
MOUNT PROSPECT, IL 60056
PHONE 847.255.2025 | FAX 847.255.4883
WEB OLDORCHARDCC.COM

OLD ORCHARD COUNTRY CLUB STAFF

Marc Heidkamp, PGA, Director of Golf Operations

mheidkamp@phparks.org | 847.666.4853

Doug Brazeau, PGA, Head Golf Professional

dbrazeau@phparks.org | 847.666.4854

Pam Nauert, Event Coordinator

pnauert@phparks.org | 224.248.8708

Niko Lopez, Kitchen Manager

nlopez@phparks.org | 224.248.8709

GROUNDS STAFF

Sean Lee, Superintendent of Golf

slee@phparks.org | 847.255.2033

Alex Torres, Mechanic

atorres@phparks.org | 847.749.0088

PROSPECT HEIGHTS GARDEN CLUB

The Prospect Heights Garden Club is an active service organization which strives to be beneficial, charitable, and educational to the community, conducive to the well-being of the environment, and supportive of the cultivation of nature's beauty. Meetings are held the first Thursday of each month, from September – May, at 11:30am at the Gary Morava Recreation Center. For more information, please contact Ann Johnson at 847-253-1223.

PROSPECT HEIGHTS YOUTH BASEBALL/SOFTBALL (PHYBS)

Prospect Heights Youth Baseball/Softball is proud of its tradition of offering the children of our community the best baseball, t-ball and softball programs in the northwest suburbs. Register at www.PHYBS.org

PROSPECT HEIGHTS LIONS CLUB

On March 26, 1954, this club was chartered by Lions International and we stand on a proud record of service to the visually impaired, hearing impaired, and to our own community. Thanks to the countless hours spent by our members over the years, our philanthropic dollars have been spent in the development of many civic and recreational services. For more information, contact Dan Busse at dbusse302@gmail.com.

TREE OF LIFE

Honor a loved one, a cherished organization or commemorate a special event by donating a tree to the Prospect Heights community. Donated trees are planted in one of the Park District's fourteen sites plus the golf course. A staff member will consult with you to choose an appropriate tree and park location. All tree donations are acknowledged with a personalized engraved Gold Leaf and leaves are displayed on a plaque at the Gary Morava Recreation Center. Please call the Superintendent of Facilities & Parks at 847-666-4867 if you would like additional information.

PARKS FOUNDATION

If you are interested in serving on the newly formed Parks Foundation, please contact Christina Ferraro at cferraro@phparks.org. Top three reasons you should volunteer on the Parks Foundation: 1. To maintain the quality of life you expect in your community. 2. To give back to your community. 3. To have fun accomplishing things around your community together with your neighbors.

INSURANCE

The Prospect Heights Park District does not provide accident insurance for participants in park programs. There is no insurance for loss of personal property. The Prospect Heights Park District is subject to the Local Governmental and Governmental Employees Tort Immunities Act, which grants immunities and defenses to claims arising of the use of recreational properties. Therefore, the Prospect Heights Park District is not responsible for loss of personal property or participation in recreation programs.

INCLUSION ASSISTANCE

Inclusion assistance is provided by NWSRA (Northwest Special Recreation Association) to those individuals who wish to participate in their home park district programs. When registering for a park district program, the parent or individual with a disability should inform the Prospect Heights Park District (and NWSRA if desired) if any accommodations are needed in order to successfully participate in the program. The Prospect Heights Park District will then contact NWSRA for assistance with the accommodation. Request must be made two weeks prior to the start of the program. Contact NWSRA at 847-392-2848 for further information. NWSRA is recruiting staff, please contact them for employment opportunities.

NORTHWEST SPECIAL RECREATION ASSOCIATION (NWSRA)

Make friends, have fun, go new places, learn new things, be included and celebrate your life at NWSRA! NWSRA exists to provide outstanding opportunities through recreation for children and adults with disabilities. The team of full-time Certified Therapeutic Recreation Specialists (CTRS) and trained part-time staff provide safe, fun and accessible year-round opportunities to individuals of any age and ability level. Inclusion assistance also provides individuals with disabilities the opportunity to participate in their home park district program. NWSRA offers hundreds of virtual and in-person programming options to meet the diverse needs and interest of the community. Check out all program offerings at nwsra.org/brochure. For more information, contact the NWSRA registration office at 847-392-2848 (voice), 847-392-2855 (TTY) or email office@nwsra.org.

The Prospect Heights Park District is a member of a cooperative agreement among 17 Park Districts which form the Northwest Special Recreation Association (NWSRA).

ADA COMPLIANCE

The Prospect Heights Park District is in full compliance with the Americans with Disabilities Act (ADA), which prohibits discrimination in the provision of programs, services or activities to individuals with disabilities. We invite any resident with a special need to contact our staff or the NWSRA staff for additional information regarding ADA issues. People with a disability are encouraged to visit the GMRC for information and input.

SAY CHEESE!

If you have great photos of you and your family or friends enjoying the Prospect Heights Park District's parks, programs or special events, we'd love to see them! These fun photos are useful in publicizing our activities and we would like to share them with your fellow residents by showcasing them in upcoming brochures. Please forward photos for consideration to Edlyn Castil at ecastil@phparks.org at the Prospect Heights Park District. Be sure to include the name of the photographer and those of your subjects so that we can be sure to give you credit for the photo. We reserve the right to photograph and videotape all park district program participants for use on our website, brochures, newsletters, social media, cable station programming, etc.

GENERAL INFORMATION

RESIDENT REGISTRATION BEGINS MONDAY, MARCH 25

NON-RESIDENT/PARTNER REGISTRATION BEGINS MONDAY, APRIL 1

WHO IS A PROSPECT HEIGHTS PARK DISTRICT RESIDENT?

You are a resident if you pay taxes to the Prospect Heights Park District.

PARTNER RESIDENT AGREEMENTS

Through our cooperative “three-for-one” agreement, all programs and most facilities offered by the three listed park districts are available to anyone living within each of the three park district boundaries. A resident of any of the three districts is considered a Partner Resident of the other two park districts and is therefore able to enroll in classes or programs at resident rates. Each of the park district golf courses will have a Partner Resident fee available on weekdays only. Although the agreement may result in an increase in the number of potential users, each park district will continue to maintain its individual identity and utilize monies available to it at present tax rates. Residents always receive priority registration within their “home district” while enjoying the added benefit of enrolling in a “partner district’s” class or program at resident rates.

River Trails Park District
1500 E. Euclid Avenue
Mount Prospect, IL 60056
847-255-1200
rtpd.org

Mt. Prospect Park District
1000 W. Central Road
Mount Prospect, IL 60056
847-255-5380
mppd.org

PARTNER RESIDENT AGREEMENT WITH SCHOOL DISTRICT 23

The Prospect Heights Park District and School District 23 entered into an intergovernmental cooperation agreement to save the taxpayers money by sharing the use of properties owned by District 23 and the Prospect Heights Park District in a manner that the facilities may be utilized to their fullest capacity. Part of this agreement includes that all inhabitants who reside within School District 23 boundaries shall be considered partner residents and will not be required to pay non-resident fees.

REFUND POLICY

A refund may be requested by completing the Refund Request Form at <https://phparks.org/refund-request-form/>. A full refund will be issued if the program is cancelled by the Park District. Prior to the commencement of the program, refunds are given except for uniforms or supplies pre-purchased. Prorated refunds may be received for medical reasons and extenuating circumstances only with the supervisor’s approval. Allow 10-15 business days for processing. No cash refunds. No refunds are given for deposits, passes, contractual programs, leagues, trips, unused activities or specials events before or after the activity unless cancelled by the Park District.



For more information
Contact Rita Nebl | rnebl@phparks.org | 224.248.9580

HOW TO CREATE A NEW ACCOUNT

Everyone must have a Customer Account to register for programs. For Prospect Heights residents and Partner residents, you need to prove residency to get the resident rate. Please check on cookcountyviewer.com. Enter your address. If your park district taxes go to Prospect Heights, you are a Resident. If your taxes go to Mt. Prospect Park District, River Trail Park District or School District 23, you are a Partner Resident. Partner Residents receive the resident rate on the non-resident registration date.

If you are a resident or a partner resident:

Visit us during our open hours of operation to make a customer account. You must bring proof of residency for you and your family members with the current address listed.

ADULTS can bring a driver’s license, state ID, or one of the following: utility bill (no older than 60 days), voter registration card, or a vehicle registration card.

CHILDREN will need to show one of these: a birth certificate, parent insurance card listing dependents, current report card, school picture ID, or other form of ID a parent may have that proves the children reside at that address.

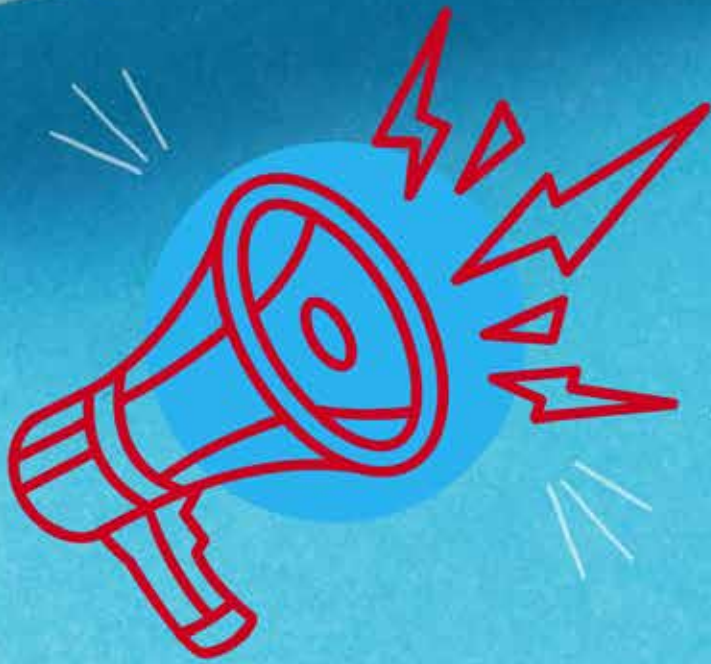
If you are a non-resident:

Call 847-394-2848 to have your account set up during open hours of operation. No proof of residency is required. You will be required to give your name, address, email, phone number and date of birth. Our front desk staff will assist you and assign you a temporary password to access online registration.

HOW TO REGISTER

- | | |
|--------------------|---|
| ONLINE | phparks.org
Click on the “Registration” banner at the top of our homepage. Sign in at My Account. |
| WALK-IN | Prospect Heights Park District
110 W. Camp McDonald Road
Prospect Heights, IL 60070 |
| MAIL-IN/FAX | Prospect Heights Park District
110 W. Camp McDonald Road
Prospect Heights, IL 60070
Fax: 847-394-7799 |
| PHONE-IN | 847-394-2848
Available for Active Adult Trips only. |

REGISTRATION INFORMATION



STAY TUNED

Coming
August 2024

NEW REGISTRATION
SOFTWARE

 **CIVICPLUS**



REGISTRATION INFORMATION

RESIDENT REGISTRATION BEGINS MONDAY, MARCH 25

NON-RESIDENT/PARTNER REGISTRATION BEGINS MONDAY, APRIL 1

FAMILY NAME _____

ADDRESS _____

CITY _____

STATE _____

ZIP _____

HOME TELEPHONE _____

CELL PHONE _____

WORK PHONE _____

EMAIL

Check if you need special accommodations to participate in this program

Resident Partner Resident Non-Resident School District #23

I would like to donate a \$1 to support PHPD Special Events

PROGRAM CODE	PROGRAM TITLE	PARTICIPANT'S NAME	BIRTH DATE	GENDER	GRADE	FEE

PAYMENT: (Circle One) Cash Check Credit Card

LAST 4-DIGITS OF CREDIT CARD _____ **EXPIRATION DATE** _____

REMIT TO: Prospect Heights Park District, 110 W. Camp McDonald Road, Prospect Heights, IL 60070 **FAX REGISTRATION** 847-394-7799

WAIVER AND RELEASE- WARNING OF RISK

Recreational Activities/programs are intended to challenge and engage the physical, mental and emotional resources of each participant. Despite careful and proper preparation, instruction, medical advice, conditioning and equipment there is still risk of serious injury when participating in any recreational activity/ program. Understandably, not all hazards and dangers can be foreseen. Depending on the particular activity, participants must understand that certain risks, dangers and injuries due to inclement weather, slipping, falling, poor skill level or conditioning, carelessness horseplay, unsportsmanlike conduct, premises defects, inadequate or defective equipment, inadequate supervision, instruction or officiating and all other circumstances inherent to indoor and outdoor recreational activities/ programs exist. In this regard, must be recognized that it is impossible for the Prospect Heights Park District to guarantee absolute safety. Please read this form carefully and be aware that in signing up and participating in the listed programs/ activities, you will be expressly assuming the risk and legal liability and waiving all claims for injuries, damages or loss that you or your minor/ward might sustain as a result of participating in any and all activities connected with that associated with this program/ activities (including transportation services/ vehicle operation, when provided) I recognize and acknowledge that there are certain risks of physical injury to participants in the listed programs. I voluntarily agree to assume the full risk of any and all injuries, damages or loss, regardless of severity, that my child/ward or I may sustain as a result of said participation. I further agree to waive and relinquish all claims I or my minor child/ward may have (or occur to me or my child/ward) as a result of participating in this program/activity against the Prospect Heights Park District, including its officials, agents volunteers and employees (hereinafter collectively referred to as "Prospect Heights Park District"). I do hereby fully release and forever discharged the Prospect Heights Park District from any and all claims for injuries damages or loss that my minor child/ward or I may have or which may occur to me and arising out of, connected with, or in any way associate with the listed programs/ activities. I have read and fully understand this important information, warning of risk, assumption of risk and waiver and release of all claims. If registering via fax, your facsimile signature shall substitute for and have the same legal effect as an original signature. On occasion, the district staff may take pictures of participants in our programs, classes events; or of people in the district's parks. Please be aware that these pictures are only for Park District use, most likely for use in future catalogs website, social media, brochures, pamphlets, posters and flyers. I guarantee to comply with all cancellation policies published in this brochure.

Signature _____ **Date** _____

What's the Buzz?

"BUG" ART

All are welcome!

USE WHATEVER MATERIAL AND SIZE YOU CHOOSE. SMALL, BIG, METAL PAPER, PLASTIC, ETC. SKY'S THE LIMIT! THROW SOME IMAGINATION IN IT AND GO! THIS IS A COMMUNITY PROJECT TO FILL IZAAK WALTON PARK WITH ART.

APRIL 14 AND
THROUGH
THE SUMMER

INSTALLATION
OF ART WORK



AT IZAAK WALTON PARK
201 N. ELMHURST ROAD, PROSPECT HEIGHTS

QUESTIONS?
CONTACT KATE AT
KATEKATUL8@AOL.COM
OR MARA AT
MARALOVISETTO@GMAIL.COM



	DATE	TIME	PAGE
Kids Day Off	Mon April 1	7:00A-6:00P	22
Family Bingo & Pizza	Fri April 19	6:00P-8:00P	8
March to Memorial Day Fitness Challenge Begins	Mon April 22		37
KinderStop Open House	Tue April 23	5:30P-6:30P	11



KinderStop Resident Registration Begins	Mon May 6	8:00A	11
Kids Day Off	Fri May 10	7:00A-6:00P	22
KinderStop Partner/Non-Resident Registration Begins	Mon May 13	8:00A	11
Summer Camp Open House	Thu May 30	5:30P-6:30P	17
Typhoons Swim Team Registration Deadline	Fri May 31		15



Prospect Heights Community Day	Sat June 1	9:00A-12:00P	8
Lions Park Pool Opens	Sat June 1		13
Little Kickers Fall Soccer League Registration Begins	Sat June 1		26
First Week of Summer Camp	Week of June 3-7		16-21
Last day to register for the The Garden Dash 2K/4K	Mon June 10		29
The Garden Dash 2K/4K	Sat June 15	9:45A	29
Dance Begins	Tue June 18		24-25
Prospect Heights Block Party	Sat June 22	4:00P-11:00P	9



Old Orchard Golf Champion Tournament	Mon July 15	8:00A-4:00P	32
Tiki Family Night	Wed July 17	5:00P-7:00P	8
Performing Arts Production Camp Performance	Thu July 18	6:30P	21



Lions Park Pool Last Regular Season Day	Fri August 9		13
National Night Out	Tue August 6	5:00P-7:00P	8
KinderStop Registration Deadline	Tue August 14		11
Little Kickers Fall Soccer League Registration Deadline	Sat August 17		26
Kids Day Off	Mon August 19	7:00A-6:00P	22
Competition Dance Team Try Outs	Mon August 19	6:00P-8:00P	24
Competition Poms Team Try Outs	Tue August 20	6:00P-8:00P	24
Kids Day Off	Tue August 20	7:00A-6:00P	22
Creative Kids Preschool Open House	Wed August 28	9:30A-10:30A	10

CALENDAR OF EVENTS



FAMILY BINGO & PIZZA

Bring the family and friends to meet our new Bingo Wizard, Wallace, for a fun evening at the park district. We will enjoy pizza & dessert as we play several games of bingo and win fun prizes. Wallace, the Bingo Wizard, brings additional fun & prizes for the evening. Please be sure to register early as this is a very popular event.

Location Gary Morava Recreation Center

Friday, April 19 6:00P-8:00P \$9 person Age 2+ 312003-07



TIKI FAMILY NIGHT

Join your friends at the Prospect Heights Park District to say farewell to Summer. We will have a splashtastic time with an evening of swimming, pool games, snacks, and more! See you at the pool.

Location Lions Park Pool

Wednesday, July 17 5:00P-7:00P \$9 person Age 4+ 112008-01



NATIONAL NIGHT OUT

The Prospect Heights Park District, Police Department & Fire Protection District invite you to spend an evening in support of National Night Out. This evening is designed to heighten crime and drug prevention awareness; generate support and participation in local anti-crime efforts and strengthen neighborhood spirit and community relations. Join us for a night of FREE open swim, complimentary food and drink, games, prizes, music and fun at National Night Out.

Location Lions Park Pool & Elm Street

Tuesday, August 6 5:00P-7:00P FREE EVENT All Ages 112003-01

BECOME A

Special Events Sponsor

SEE PAGE 39



SPECIAL EVENTS



CELEBRATE WITH US

HONORING THE PROSPECT HEIGHTS
LIONS CLUB 70TH ANNIVERSARY



4:00 PM - 11:00 PM

110 W CAMP MCDONALD ROAD
847.394.2848 PHPARKS.ORG

★ THE FUN BEGINS AT 4PM!

- 4:00-4:30PM DANCE COMPETITION TEAM SHOWCASE
- 4:00-6:30PM FREE SWIM AT LIONS PARK POOL
- 4:00-7:00PM FREE OPEN GYM AT GMRC
- 4:00-7:00PM COMMUNITY ORGANIZATIONS
- 4:00-8:00PM KIDS ZONE INFLATABLES & GAGA PIT
- 4:00-8:00PM FACE PAINTING
- 4:00-11:00PM FOOD TRUCKS, BEER & WINE GARDEN
- 4:30-5:30PM PET PAGEANT
- 5:30-6:30PM FREE BINGO
- 6:45-7:00PM LIONS CLUB DUCK RACE FUNDRAISER

★ LIVE MUSIC

- 7:00-8:30PM WHISKEY ROAD
- 9:30-11:00PM BOY BAND NIGHT

★ THANK YOU TO OUR SPONSORS



Business | Wealth Management | Personal

SPECIAL EVENTS



Our program consists of half structured and half unstructured class time. Our structured curriculum incorporates Jolly Phonics and Handwriting without Tears.

A typical day:

- Begins with exploratory time in different activity centers
- Craft of the day
- Rug time includes songs, counting, calendar, alphabet, and more
- Alternating music, musical instruments, puppets, or large muscle movements
- Snack Time
- Academic curriculum
- Ends with a visit to the park or indoor gym

The program incorporates trips which may include: fire station, library, pumpkin patch and amusement centers. An extra charge for admission and/or bus fee is required for some trips.

4Y old students can enroll in KinderStop for a full day option. See page 11 for details.

To register, a one month deposit and birth certificate are required. The deposit is applied to the May tuition if the child attends all year. For the deposit, \$120 will not be refunded under any circumstances. Unfortunately, it is not possible for us to prorate your monthly payments due to vacations or illness. The annual preschool fee is broken down into equal monthly installments for ease of tracking. Monthly days of attendance will fluctuate. Automatic billing to your credit card is available. Eight monthly payments are due the first day of the month (Sept-Apr).

M,W,F	Sept 4-May 14	4Y	8:45A-11:45A	R \$200 NR \$220	R \$1,632 NR \$1,794	603002-10
M-F	Sept 3-May 14	4Y	8:45A-12:00P	R \$315 NR \$345	R \$2,562 NR \$2,806	603002-11
M-F	Sept 4-May 14	3Y-4Y	12:00P-3:15P	R \$315 NR \$345	R \$2,562 NR \$2,806	603002-12
Tu,Th	Sept 3-May 13	3Y	8:45A-11:45A	R \$150 NR \$180	R \$1,227 NR \$1,470	603002-13
Tu,Th	Sept 3-May 13	2.5Y	12:00P-1:30P	R \$115 NR \$130	R \$943 NR \$1,065	603002-15
<i>Must be of age by Sept 1, 2024</i>				<i>Per Month</i>		<i>Pay in Full (10% discount)</i>

OPEN HOUSE

Meet the teachers, tour our classrooms & learn about our program



2024 EXTENDED PRESCHOOL

Extended Preschool will be an extension of our current preschool. We will reinforce all academic skills, name, and letter recognition, sounds, sharing, taking turns and socialization. Our daily routine will include craft, academic worksheets, rug time and open play. Rug time will consist of attendance, calendar, weather, practicing letter and sound, songs, reading stories, and music. Academic worksheets will reinforce small motor skills, shapes, numbers, letters, matching, and sorting. There will also be outdoor play time at the park or free play in the gym. Please send your child with a small snack and water bottle.

Location Gary Morava Recreation Center
Times 9:00A-12:00P

M,W,F	May 13-17	R \$69 NR \$79	103002-10
Tu,Th	May 14-16	R \$50 NR \$60	103002-11
M,W,F	May 20-24	R \$69 NR \$79	103002-12
Tu,Th	May 21-23	R \$50 NR \$60	103002-13

2024-2025 CREATIVE KIDS PRESCHOOL

The KinderStop program is operated by the Prospect Heights Park District, in cooperation with School District 23.

AGE 4-7

LOCATION
GARY MORAVA RECREATION CENTER

Participants must be 4 years of age by September 1, 2024, to participate in any KinderStop program.

RESIDENT REGISTRATION
STARTS MAY 6 AT 8:00A

School District 23 will provide transportation for Early Childhood, Kindergarten, and first grade participants on attendance days. Parents are responsible for notifying School District 23 that your child is enrolled in KinderStop and will need transportation. KinderStop does not meet on days when School District 23 is not in session, however we offer a Kids Day Off Program on non-attendance days. (See page 22)

NON-RESIDENT/PARTNER REGISTRATION
STARTS MAY 13 AT 8:00A

REGISTRATION DEADLINE
AUGUST 14, 2024

			<i>Per Month</i>	<i>Pay in Full (10% discount)</i>	
M,W,F	Aug 21-June 6	7:00A-7:50A	\$43	\$398	604200-10
Tu,Th	Aug 22-June 5	7:00A-7:50A	\$28	\$277	604200-11
M,W,F	Aug 21-June 6	7:00A-8:45A	\$84	\$730	604200-02
Tu,Th	Aug 22-June 5	7:00A-8:45A	\$55	\$495	604200-03
M,W,F	Aug 30-June 6	8:45A-11:30A	\$265	\$2,197	604200-04
Tu,Th	Aug 29-June 5	8:45A-11:30A	\$163	\$1,370	604200-05
M,W,F	Aug 20-June 6	11:00A-2:30P	\$311	\$2,569	604200-06
Tu,Th	Aug 29-June 5	11:00A-2:30P	\$209	\$1,743	604200-07
M,W,F	Aug 21-June 6	2:30P-6:00P	\$133	\$1,128	604200-08
Tu,Th	Aug 22-June 5	2:30P-6:00P	\$88	\$763	604200-09

A \$50 non-refundable deposit at the time of registration for each section.



VISIT
PHPARKS.ORG/KINDERSTOP
FOR MORE DETAILS

OPEN HOUSE

Meet the teachers, tour our classroom & learn about our program



For more information
Contact Laura Fudala | lfudala@phparks.org | 847.666.4878

2024-2025 KINDERSTOP



CELEBRATING 70 YEARS

of Prospect Heights Lions Club



HONORING THE PROSPECT HEIGHTS LIONS CLUB

POOL HOURS

REGULAR SEASON:

June 1–August 9

Monday-Friday	11:00A-7:00P*
Saturdays	11:00A-5:00P
Sundays	11:00A-3:30P
July 4th	12:00P-5:00P

*Please note the Typhoons Swim Team will be conducting practice in the six competition lanes of the pool between 5:30P-7:00P Monday-Friday. The water slide and zero depth areas will be available. The pool will close at 3:15P on Wednesday, June 19 for a home swim meet.

POST SEASON (Saturdays & Sundays only)

August 10, 17	11:00A-5:00P
August 11, 18	11:00A-3:30P

DAILY ADMISSION FEE:

Infant (0Y-11 months)	Free
Children, Adults & Seniors	\$7
Twilight Hours (after 4:30P)	\$5

SEASON POOL PASS RATES:

Early Bird (April 1-May 12)	R \$55 NR \$65
Regular Season (May 13-July 11)	R \$65 NR \$75
Half Season (July 12-August 18)	R \$30 NR \$35

LAP SWIM HOURS:

Saturday	8:30A-10:30A
----------	--------------

POOL RENTAL AVAILABILITY & FEES

Rental includes exclusive use of Elm Room and pool, including lifeguards. Must reserve at least 14 days in advance of rental date. Total rental time is 2 hours. Max for Elm Room is 115 people. No minimum.

Residents: \$375

Non-Residents: \$425

DAY	ELM ROOM TIME	POOL TIME
Sa	5:00P-7:00P	5:30P-7:00P
Su	3:30P-5:30P	4:00P-5:30P

POOL CLOSURE INFO

- Under 70 degrees according to the National Weather Service
- Thunder, lightning and severe weather
- Mechanical Failures/Chemical Imbalance
- Special events or swim meets
- We reserve the right to close the pool if 20 participants or less are using the pool

POOL RULES

- No food, drink, vaping or tobacco is allowed in the pool area
- Keep all food and drinks in concession area
- No running or horseplay on the pool deck
- Street clothes are not permitted, a swim suit is required for all swimmers
- Glass is not allowed in the pool area.
- No diving
- All children who are not toilet trained are required to wear a swim diaper AND bathing suit
- Swimmers must be 42" or taller to go down the water slide
- All children under the age of 13 must be supervised by an adult who is 16 years or older
- All children using a lifejacket must be supervised by an adult in the pool within arm's reach at all times
- Individuals wearing lifejackets are not permitted on the slide
- Only U.S. Coast Guard approved lifejackets and flotation devices are allowed in the pool



For more information

Contact Pan Zervas | pzervas@phparks.org | 847.394.6376

AQUATICS

PROSPECT HEIGHTS PARK DISTRICT SWIM LESSONS

SCAN
FOR
MORE
INFO



Monday - Thursday Make ups on Fridays Fee R \$90/NR \$100 per session (8 lessons) *Fee R \$79/NR \$88 per session (7 lessons)			Saturdays Fee: R \$90 / NR \$100 per session (8 lessons)		
June 10-June 20 *June 24-July 3 (No class July 4)		July 8-July 18 July 22-August 1	June 15-August 3		
8:30A-9:00A	9:10A-9:40A	9:50A-10:20A	9:10A-9:40A	9:50A-10:20A	10:30A-11:00A
Jellyfish 110010-01-04	Jellyfish 110010-17-20	Jellyfish 110010-33-36	Adult & Tot 110001-01	Adult & Tot 110001-06	Adult & Tot 110001-11
Sea Turtle 110010-05-08	Sea Turtle 110010-21-24	Sea Turtle 110010-37-40	Jellyfish 110001-02	Jellyfish 110001-07	Jellyfish 110001-12
Penguin 110010-09-12	Penguin 110010-25-28	Penguin 110010-41-44	Sea Turtle 110001-03	Sea Turtle 110001-08	Sea Turtle 110001-13
Star Fish 110010-13-16	Star Fish 110010-29-32	Star Fish 110010-45-48	Penguin 110001-04	Penguin 110001-09	Penguin 110001-14
			Star Fish 110001-05	Star Fish 110001-10	Star Fish 110001-15

SWIM LEVELS

ADULT & TOT
SWIM LESSONS

JELLYFISH
SWIM LESSONS

SEA TURTLE
SWIM LESSONS

PENGUIN
SWIM LESSONS

STAR FISH
SWIM LESSONS

PRIVATE & SEMI-PRIVATE LESSONS

will be scheduled at a mutually agreed time between the family and instructor.

PRIVATE LESSONS

Private Lessons
6 lessons -
\$170/child or
\$32/lesson

SEMI-PRIVATE LESSONS

Semi-Private Lessons
6 lessons -
\$115/child or
\$22/lesson



For more information
Contact Pan Zervas | pzervas@phparks.org | 847.394.6376



SWIM TEAM | TYPHOONS

Location Lions Park Pool

Age 5-18

The Typhoons Swim Team is part of the Northern Illinois Swim Conference. The emphasis of this conference is placed on learning competitive skills, enjoyment of the sport, and lifelong participation in swimming. There are also conference dual swim meets every week during the swim team summer season. Children who are 8 years old and younger must be able to swim 25 yards non-stop (1 length of the pool) without help. Children who are 9 years old and older must be able to swim 50 yards non-stop (2 lengths of the pool).

REGISTRATION DEADLINE FRI MAY 31

June 1-3, you can register for the waitlist.

MANDATORY COACHES/PARENT MEETING

Wed May 29 6:00P-7:30P or Mon June 3 7:00P-8:30P

5-8Y M-F June 3-July 24 5:30P-7:00P R \$200 NR \$250 110002-01

9-18Y M-F June 3-July 24 5:30P-7:00P R \$200 NR \$250 110002-02



SWIM TEAM | TYPHOONS



CAMP

DROP-OFF

PICK-UP

Early Explorers Camp	1 GMRC Willow Room	1 GMRC Willow Room
Explorers Camp	2 Curbside Elm St. Northbound	2 Curbside Elm St Northbound
Adventure Camp	4 *Eisenhower School (Front Entrance)	5 McDonald Ballfield
Sports Camp	3 GMRC Tennis Courts	3 GMRC Tennis Courts
Camp Voyager	8 GMRC Gymnasium	5 McDonald Ballfield
Creative/Performing Arts Day Camp	6 GMRC Pine Room	7 GMRC Front Circle
Last Hurrah	2 5Y-7Y Curbside Elm St. Northbound	2 5Y-7Y Curbside Elm St. Northbound
	8 8Y and older GMRC Gymnasium	7 8Y and older GMRC Front Circle

*Pending final approval from School District 23

SUMMER CAMP DROP-OFF & PICK-UP MAP

CAMP OPEN HOUSE

We will have a camp open house on **Thursday, May 30, from 5:30P to 6:30P at the Gary Morava Recreation Center**. We invite you to stop in and take a tour of our facilities, meet the counselors in your child's camp and ask questions. Camp lunch forms will be available starting at the camp open house.

CAMP DIRECTOR & COORDINATORS

Our Camp Director and Coordinators are seasoned staff members who have been with us for numerous years and are currently pursuing or have completed a college degree. All of our counselors for camps with children over five years of age, have graduated high school and show an aptitude towards childcare education.

Prospect Heights Park District

Summer Camp 2024 PARENT HANDBOOK

#LovePH Parks

#LovePH Parks

110 W. Camp McDonald Road
Prospect Heights, IL 60070

847.394.2848

phparks.org

Stay Connected

f i t

SCAN TO VIEW PARENT HANDBOOK ONLINE



For more information
Contact Laura Fudala | lfudala@phparks.org | 847.666.4878

CAMP REGISTRATION DATES & PAYMENT

OPTION 1 – PAYMENT IN FULL

Register for the weeks of camp you need, and full payment will be collected at the time of registration. For Week 1 (June 3), the camp week must be paid in full.

OPTION 2 – AUTOMATIC BILL PAY

1. Auto bill pay is available for Weeks 2 – 10.
2. Provide a credit/debit card to be billed that is valid for all camp weeks.
3. Your saved credit/debit card will be charged 7 days prior to the start of the camp week.

Camp Week	Auto Bill Date	Registration Deadline (12 PM)
Week 1 - 06/03	N/A - Pay in Full	05/29
Week 2 - 06/10	06/03	06/05
Week 3 - 06/17	06/10	06/12
Week 4 - 06/24	06/17	06/19
Week 5 - 07/01	06/24	06/26
Week 6 - 07/08	07/01	07/03
Week 7 - 07/15	07/08	07/10
Week 8 - 07/22	07/15	07/17
Week 9 - 07/29	07/22	07/24
Week 10 - 08/05	07/29	07/31

REFUND GUIDELINES

Cancellation of automatic bill payment weeks or refund requests must be submitted by the deadline printed in the Summer Camp Parent Manual. Payments are not prorated due to vacations or illness. To request a refund, please complete the form at <https://phparks.org/refund-request-form>.



SUMMER CAMP

EARLY EXPLORERS CAMP

This will be the first experience of camp for our 3Y-4Y (entering 3Y-4Y preschool) campers! We will have lots of indoor and outdoor small group activities, games and crafts! Plus each day the campers will go swimming during non-public swim time. Children must be completely potty trained. No diapers or pull ups. Come enjoy the summer fun with us!

Location Gary Morava Recreation Center
Age 3-4
***New Time 9:00A-1:30P**

M,W,F	June 3-7	R \$96 NR \$106	114001-10
Tu,Th	June 4-6	R \$64 NR \$74	114001-11
M,W,F	June 10-14	R \$96 NR \$106	114001-12
Tu,Th	June 11-13	R \$64 NR \$74	114001-13
M,W,F	June 17-21	R \$96 NR \$106	114001-14
Tu,Th	June 18-20	R \$64 NR \$74	114001-15
M,W,F	June 24-28	R \$96 NR \$106	114001-16
Tu,Th	June 25-27	R \$64 NR \$74	114001-17
M,W	July 1-3	R \$64 NR \$74	114001-18
Tu	July 2	R \$32 NR \$37	114001-19
M,W,F	July 8-12	R \$96 NR \$106	114001-20
Tu,Th	July 9-11	R \$64 NR \$74	114001-21
M,W,F	July 15-19	R \$96 NR \$106	114001-22
Tu,Th	July 16-18	R \$64 NR \$74	114001-23
M,W,F	July 22-26	R \$96 NR \$106	114001-24
Tu,Th	July 23-25	R \$64 NR \$74	114001-25
M,W,F	July 29-Aug 2	R \$96 NR \$106	114001-26
Tu,Th	July 30-Aug 1	R \$64 NR \$74	114001-27

EXPLORERS CAMP

This enriching camp will promote a healthy lifestyle through active play and social activities. Your child's strengths will be showcased through a variety of daily activities including arts and crafts, small group games, open swim and more! This camp will take off-site field trips.

Location Gary Morava Recreation Center
Entering K-2nd Grades
Times 9:00A-3:00P

M,W,F	June 3-7	R \$99 NR \$109	114002-10
Tu,Th	June 4-6	R \$67 NR \$77	114002-11
M,W,F	June 10-14	R \$99 NR \$109	114002-12
Tu,Th	June 11-13	R \$67 NR \$77	114002-13
M,W,F	June 17-21	R \$99 NR \$109	114002-14
Tu,Th	June 18-20	R \$67 NR \$77	114002-15
M,W,F	June 24-28	R \$99 NR \$109	114002-16
Tu,Th	June 25-27	R \$67 NR \$77	114002-17
M,W	July 1-3	R \$67 NR \$77	114002-18
Tu	July 2	R \$34 NR \$39	114002-19
M,W,F	July 8-12	R \$99 NR \$109	114002-20
Tu,Th	July 9-11	R \$67 NR \$77	114002-21
M,W,F	July 15-19	R \$99 NR \$109	114002-22
Tu,Th	July 16-18	R \$67 NR \$77	114002-23
M,W,F	July 22-26	R \$99 NR \$109	114002-24
Tu,Th	July 23-25	R \$67 NR \$77	114002-25
M,W,F	July 29-Aug 2	R \$99 NR \$109	114002-27
Tu,Th	July 30-Aug 1	R \$67 NR \$77	114002-28

CAMP ADVENTURE

This enrichment camp will promote a healthy lifestyle through active play and enriching social activities. Your child's strengths will be showcased through a variety of daily activities including arts and crafts, small group games, open swim and much more. This camp takes offsite field trips.

Location Eisenhower School
Entering 3rd-6th Grades
Times 9:00A-3:00P

M,W,F	June 3-7	R \$99 NR \$109	114300-10
Tu,Th	June 4-6	R \$67 NR \$77	114300-11
M,W,F	June 10-14	R \$99 NR \$109	114300-12
Tu,Th	June 11-13	R \$67 NR \$77	114300-13
M,W,F	June 17-21	R \$99 NR \$109	114300-14
Tu,Th	June 18-20	R \$67 NR \$77	114300-15
M,W,F	June 24-28	R \$99 NR \$109	114300-16
Tu,Th	June 25-27	R \$67 NR \$77	114300-17



**REGISTER
ONLINE AT
PHPARKS.ORG**

M,W	July 1-3	R \$67 NR \$77	114300-18
Tu	July 2	R \$34 NR \$39	114300-19
M,W,F	July 8-12	R \$99 NR \$109	114300-20
Tu,Th	July 9-11	R \$67 NR \$77	114300-21
M,W,F	July 15-19	R \$99 NR \$109	114300-22
Tu,Th	July 16-18	R \$67 NR \$77	114300-23
M,W,F	July 22-26	R \$99 NR \$109	114300-24
Tu,Th	July 23-25	R \$67 NR \$77	114300-25
M,W,F	July 29-Aug 2	R \$99 NR \$109	114300-26
Tu,Th	July 30-Aug 1	R \$67 NR \$77	114300-27

SUMMER CAMP

SPORTS CAMP

Designed for both boys and girls who want to engage in a variety of sport activities. Campers will participate in volleyball, basketball, soccer, wiffle ball, floor hockey, and flag football and other camp favorite group games. Campers will also learn the value of good sportsmanship and nutrition.

Location Gary Morava Recreation Center
Entering 2nd-5th Grades
Time 9:00A-3:00P

M,W,F	June 3-7	R \$99 NR \$109	114003-10
Tu,Th	June 4-6	R \$67 NR \$77	114003-11
M,W,F	June 10-14	R \$99 NR \$109	114003-12
Tu,Th	June 11-13	R \$67 NR \$77	114003-13
M,W,F	June 17-21	R \$99 NR \$109	114003-14
Tu,Th	June 18-20	R \$67 NR \$77	114003-15
M,W,F	June 24-28	R \$99 NR \$109	114003-16
Tu,Th	June 25-27	R \$67 NR \$77	114003-17
M,W	July 1-3	R \$67 NR \$77	114003-18
Tu	July 2	R \$34 NR \$39	114003-19
M,W,F	July 8-12	R \$99 NR \$109	114003-20
Tu,Th	July 9-11	R \$67 NR \$77	114003-21
M,W,F	July 15-19	R \$99 NR \$109	114003-22
Tu,Th	July 16-18	R \$67 NR \$77	114003-23
M,W,F	July 22-26	R \$99 NR \$109	114003-24
Tu,Th	July 23-25	R \$67 NR \$77	114003-25
M,W,F	July 29-Aug 2	R \$99 NR \$109	114003-26
Tu,Th	July 30-Aug 1	R \$67 NR \$77	114003-27

Location Gary Morava Recreation Center
Entering 6th-8th Grades
Time 9:00A-3:00P

M,W,F	June 3-7	R \$99 NR \$109	114003-28
Tu,Th	June 4-6	R \$67 NR \$77	114003-29
M,W,F	June 10-14	R \$99 NR \$109	114003-30
Tu,Th	June 11-13	R \$67 NR \$77	114003-31
M,W,F	June 17-21	R \$99 NR \$109	114003-32
Tu,Th	June 18-20	R \$67 NR \$77	114003-33
M,W,F	June 24-28	R \$99 NR \$109	114003-34
Tu,Th	June 25-27	R \$67 NR \$77	114003-35
M,W	July 1-3	R \$67 NR \$77	114003-36
Tu	July 2	R \$34 NR \$39	114003-37
M,W,F	July 8-12	R \$99 NR \$109	114003-38
Tu,Th	July 9-11	R \$67 NR \$77	114003-39
M,W,F	July 15-19	R \$99 NR \$109	114003-40
Tu,Th	July 16-18	R \$67 NR \$77	114003-41
M,W,F	July 22-26	R \$99 NR \$109	114003-42
Tu,Th	July 23-25	R \$67 NR \$77	114003-43
M,W,F	July 29-Aug 2	R \$99 NR \$109	114003-44
Tu,Th	July 30-Aug 1	R \$67 NR \$77	114003-45

CAMP VOYAGER

Come travel with us! This camp will provide a new adventure each day! We will spend three days experiencing all the suburbs have to offer from water parks to entertainment venues. The other two days of the week campers will engage in various small group activities. All admissions are included in the camp fees.

Location Gary Morava Recreation Center
Entering 5th-8th Grades
Time 9:00A-3:00P

M-F	June 3-7	R \$179 NR \$199	114004-10
M-F	June 10-14	R \$179 NR \$199	114004-11
M-F	June 17-21	R \$179 NR \$199	114004-12
M-F	June 24-28	R \$179 NR \$199	114004-13
M-W	July 1-3	R \$108 NR \$120	114004-14
M-F	July 8-12	R \$179 NR \$199	114004-15
M-F	July 15-19	R \$179 NR \$199	114004-16
M-F	July 22-26	R \$179 NR \$199	114004-17
M-F	July 29-Aug 2	R \$179 NR \$199	114004-18

SPORTS SPECIFIC CAMPS ON PAGE 27

LAST HURRAH

This is our final week of camp before school starts! Activities include games, crafts, gym, swimming, playground and more. We will split the kids up by ages. Combine this with our Before and After care to make this a full day of camp.

Location Gary Morava Recreation Center
Age 5-11
Time 9:00A-3:00P

M,W,F	Aug 5-9	R \$99 NR \$109	114006-10
Tu,Th	Aug 6-8	R \$67 NR \$77	114006-11

SUMMER CAMP

BEFORE AND AFTER CARE

The before and after camp programs are designed exclusively for children enrolled in the Prospect Heights Park District summer camps. Extended activities include games, crafts, gym and playground time. Children should bring a snack for the after care portion of the day.

Location Gary Morava Recreation Center
Age 5-13
Time 7:00A-9:00A

M,W,F	June 3-7	R \$45 NR \$55	114007-10
Tu,Th	June 4-6	R \$32 NR \$42	114007-11
M,W,F	June 10-14	R \$45 NR \$55	114007-12
Tu,Th	June 11-13	R \$32 NR \$42	114007-13
M,W,F	June 17-21	R \$45 NR \$55	114007-14
Tu,Th	June 18-20	R \$32 NR \$42	114007-15
M,W,F	June 24-28	R \$45 NR \$55	114007-16
Tu,Th	June 25-27	R \$32 NR \$42	114007-17
M,W	July 1-3	R \$32 NR \$42	114007-18
Tu	July 2	R \$16 NR \$21	114007-19
M,W,F	July 8-12	R \$45 NR \$55	114007-20
Tu,Th	July 9-11	R \$32 NR \$42	114007-21
M,W,F	July 15-19	R \$45 NR \$55	114007-22
Tu,Th	July 16-18	R \$32 NR \$42	114007-23
M,W,F	July 22-26	R \$45 NR \$55	114007-24
Tu,Th	July 23-25	R \$32 NR \$42	114007-25
M,W,F	July 29-Aug 2	R \$45 NR \$55	114007-26
Tu,Th	July 30-Aug 1	R \$32 NR \$42	114007-27
M,W,F	Aug 5-9	R \$45 NR \$55	114007-28
Tu,Th	Aug 6-8	R \$32 NR \$42	114007-29

Location Gary Morava Recreation Center
Age 5-13
Time 3:00P-6:00P

M,W,F	June 3-7	R \$53 NR \$63	114007-30
Tu,Th	June 4-6	R \$36 NR \$46	114007-31
M,W,F	June 10-14	R \$53 NR \$63	114007-32
Tu,Th	June 11-13	R \$36 NR \$46	114007-33
M,W,F	June 17-21	R \$53 NR \$63	114007-34
Tu,Th	June 18-20	R \$36 NR \$46	114007-35
M,W,F	June 24-28	R \$53 NR \$63	114007-36
Tu,Th	June 25-27	R \$36 NR \$46	114007-37
M,W	July 1-3	R \$36 NR \$46	114007-38
Tu	July 2	R \$18 NR \$23	114007-39
M,W,F	July 8-12	R \$53 NR \$63	114007-40
Tu,Th	July 9-11	R \$36 NR \$46	114007-41
M,W,F	July 15-19	R \$53 NR \$63	114007-42
Tu,Th	July 16-18	R \$36 NR \$46	114007-43
M,W,F	July 22-26	R \$53 NR \$63	114007-44
Tu,Th	July 23-25	R \$36 NR \$46	114007-45
M,W,F	July 29-Aug 2	R \$53 NR \$63	114007-46
Tu,Th	July 30-Aug 1	R \$36 NR \$46	114007-47
M,W,F	Aug 5-9	R \$53 NR \$63	114007-48
Tu,Th	Aug 6-8	R \$36 NR \$46	114007-49

Looking for an alternate to after care, check out



on page 21

For more information
 Contact Laura Fudala | lfudala@phparks.org | 847.666.4878



SUMMER CAMP

CREATIVE & PERFORMING ARTS CAMP

Lights! Camera! Action! Fun! Join us for a fun spin on summer camp. Enjoy an amazing Creative and Performing Arts experience that will include dancing, singing, painting, acting, playwriting, crafts, set design, and so much more! This is a 5-day camp as we build on skills throughout the week. The camp fee includes 1 special event/field trip.

Location Gary Morava Recreation Center
Age 6-15
Time 9:00A-3:00P

M-F	June 3-7	R \$179 NR \$199	108001-01
M-F	June 10-14	R \$179 NR \$199	108001-02
M-F	June 17-21	R \$179 NR \$199	108001-03
M-F	June 24-28	R \$179 NR \$199	108001-04
M-W	July 1-3	R \$179 NR \$199	108001-05
M-F	July 8-12	R \$179 NR \$199	108001-06
M-F	July 15-19	R \$179 NR \$199	108001-07
M-F	July 22-26	R \$179 NR \$199	108001-08
M-F	July 29-Aug 2	R \$179 NR \$199	108001-09
M-F	Aug 5-9	R \$179 NR \$199	108001-10

PRODUCTION CAMP AFTER CARE

This is geared for those camp participants enrolled in our Performing Arts Production Camp who need care on Thursday and Friday.

Location Gary Morava Recreation Center
Age 6-13
Time 3:00P-6:00P

Th,F	June 13-14	R \$36 NR \$46	114010-03
Th,F	June 20-21	R \$36 NR \$46	114010-04
Th,F	June 27-28	R \$36 NR \$46	114010-05
Th,F	July 11-12	R \$36 NR \$46	114010-06
F	July 19	R \$18 NR \$23	114010-07



In just a few short weeks, our talented staff will help the campers put on a full-scale musical theatre production. Campers will also learn the basic techniques of acting, singing and dancing for musical theatre. Theatre fundamentals are emphasized with first-hand tricks to memorizing lines, character development, costuming, set design and so much more. All are welcome.

Our Summer Production will be Jumanji, The Musical. When a group of siblings discover an old board game in their closet, their house starts to become one with the jungle as the game comes to life! When they free someone who has been trapped in the game for decades, they learn they must win to keep him free! Will they win the game? Fee includes a Production t-shirt. **Our show will be on Thursday, July 18 at 6:30P.**

Location Gary Morava Recreation Center
Age 6-15
Days M-W
June 10-July 17
Time 3:00P-6:00P
Fee \$209 | 108002-01



For more information
Contact Marci Glinski | mglinski@phparks.org | 847.666.4875

SUMMER CAMP

KIDS DAY OFF | SPRING & SUMMER

Wondering what to do with your kids when they have a day off of school? We have the answer! Your kids are sure to have a great time making new friends. Register for this convenient program and we'll take them on a trip, play fun games, enjoy organized sports and make fun crafts! Children may be signed into the program anytime between 7am-9am and signed out between 3:30pm-6pm ALL FOR THE SAME FEE. Most trips leave by 9am and return by 3:30pm. Additional spending money for vending machines, souvenirs, or additional activities is optional. You must pre-register for each trip. Children should bring a snack, water bottle and a lunch unless otherwise specified. Space is limited, register early! Registration deadline is one week prior to the day off.

Location Gary Morava Recreation Center
Times 7:00A-6:00P
Age K-6th Grades

Monday, April 1	R \$69 NR \$74	305300-25
Friday, May 10	R \$69 NR \$74	305300-27
Monday, August 19	R \$69 NR \$74	105101-01
Tuesday, August 20	R \$69 NR \$74	105101-02

MAGIC CLASS WITH GARY KANTOR

Children are guaranteed to have a great time in this class as they learn fascinating tricks from a professional magician! Amaze your family and friends with tricks that involve cards, ropes, coins, mind reading and more. While the tricks may appear difficult, you'll discover that they are quick to learn and easy to perform. All materials will be provided, and each child will be awarded a magic certificate. Also, children can sign up for this class again and again since brand new tricks are taught at each session. The class will be taught by the magic team of Gary Kantor.

Location Arlington Ridge Center
Age 5-12

Monday, May 13	6:30P-7:25P	\$25	405400-01
Tuesday, June 18	5:00P-5:55P	\$25	105001-10
Thursday, August 15	6:30P-7:25P	\$25	105001-11

For more information
Contact Laura Fudala
lfudala@phparks.org
847.666.4878



ROBOT ENGINEERS

This course builds knowledge of simple machines, engineering, programming, and teamwork. Using the LEGO WeDO Robotics System, the students use an intuitive, icon-based programming environment, helping to bring their model to life.

Location Mt. Prospect Park District, 1000 W. Central Rd.
Times 12:45P-2:15P
Age 7-12

M-Th July 15-18 \$101 105504-01

MINECRAFT MADNESS

Explore the world of Minecraft, one of the most popular video games in history, offers an amazing world of endless possibilities. Let your imagination transform your Minecraft experience into a unique world YOU create! Students will discover how to expand their world's possibilities using popular game-enhancing mods. Build traps, arrow launchers, faster rail systems and more & participate in building challenges! Learn fundamentals of computer networking through this unique Minecraft experience that also allows you and your friends to work in multiplayer mode as you mine, craft and build together to survive.

Location Mt. Prospect Park District, 1000 W. Central Rd.
Times 12:45P-2:15P
Age 7-12

M-Th June 17-20 \$101 105509-01

CREATIVE ARTS WITH KATIE

Location Gary Morava Recreation Center

Looking for a fun and easy art class? Grab your paintbrush and try Creative Arts With Katie! Each week we will be exploring simple techniques with a new medium and complete a fun and open ended project! Learn about watercolor, acrylic paint, markers, colored pencils, splatter paint, collaging and more!

Age 6+	M	April 8-29	1:00P-2:00P	\$46	308006-03
Age 5-7	M	April 8-29	3:00P-4:00P	\$46	308006-06
Age 8+	W	April 10-May 1	6:00P-7:00P	\$46	308006-09

For more information
Contact Marci Glinski | mglinski@phparks.org | 847.666.4875



CHILDREN'S PROGRAMS | CREATIVE ARTS

STORYTIME IN THE PARK

Join us for Storytime in the Park presented by the Prospect Heights Park District and the Prospect Heights Public Library. Bring a blanket to sit on to enjoy a story and craft. An adult must remain with the child during storytime. In case of inclement weather, storytime will be canceled. Bring your picnic and stay to enjoy the afternoon. The program is FREE, we just request that you register for planning purposes. In the event of inclement weather, the program will be cancelled.

All Ages

F June 28 11:00A-11:30A FREE 112009-01 Claire Lane Park 617 Claire Lane, Prospect Heights
 F July 26 11:00A-11:30A FREE 112009-02 Wedgewood Park 5 W Oxford Place, Mt. Prospect

ADVENTURES IN STEM WITH LEGO MATERIALS

Let your imagination run wild with tens of thousands of LEGO parts! Build engineer-designed projects and use special pieces to create your own unique design! Projects are rotated seasonally to ensure both new and returning students can explore the endless creative possibilities of the LEGO building system. Please bring a snack and water bottle.

Registration deadline is August 5, 2024.

Location Gary Morava Recreation Center
Times 9:00A-12:00P
Age 5-7

M-Th Aug 12-16 \$168 105900-01

STEM EXPLORATIONS WITH LEGO MATERIALS

Master your engineering skills with Play-Well TEKnologies and tens of thousands of LEGO parts! Apply real-world concepts in physics, engineering, and architecture through engineer-designed projects. Projects are rotated seasonally to ensure that even returning students get a new experience. So join us to design and build as never before and explore your craziest ideas. Please bring a snack and water bottle.

Registration deadline is August 5, 2024.

Location Gary Morava Recreation Center
Times 1:00P-4:00P
Age 7-12

M-Th Aug 12-16 \$168 105901-01



PUPPY BEGINNINGS

Join us for a class designed to provide young puppies with a well-rounded and enriching experience during their crucial early months of life (2-5 months). This program focuses on three key components: training, exploration, and play, all of which are essential for a puppy's physical, mental, and emotional development. Only positive reinforcement training methods are used. Proof of the first round of vaccinations at least 10 days prior to starting class must be provided.

Location Gary Morava Recreation Center, Elm Room
Times 10:00A-11:00A
***No Class May 18, May 25**

Sa April 27-June 15* R \$250 NR \$275 107950-01
 Sa June 22-July 27 R \$250 NR \$275 107950-02



BASIC BEHAVIORS TRAINING

Training your dog using positive reinforcement methods help you to communicate effectively and build a trusting relationship with them. In this class, dogs six months and older will learn the building block behaviors of sit, down, leave it, drop it and more. Proof of up to date vaccinations are required prior to starting the program.

Location Gary Morava Recreation Center, Elm Room
Times 11:15A-12:15P
***No Class May 18, May 25**

Sa April 27-June 15* R \$250 NR \$275 107951-01
 Sa June 22-July 27 R \$250 NR \$275 107951-02



For more information
Contact Pan Zervas | pzervas@phparks.org | 847.394.6376

CHILDREN'S PROGRAMS | DOG OBEDIENCE

COMPETITION DANCE TEAM & COMPETITION POMS TEAM TRY OUTS FOR THE 2024-2025 SEASON



Come hear all about our Competition Dance Team & our **NEW** Poms Competition Team at the parent/dancer meeting on Wednesday, August 14, 2024 at 6:00pm. If you are not able to attend and would like more information, please email mglinski@phparks.org

Cuts will be made after the first two clinics, and everyone invited back on Saturday will be an official member of the Star Studio Competition Teams.

Dancers must be ages 6+ by January 1, 2025.

Payment Plans and fundraising available.

Mon Aug 19	6:00P-8:00P	Competition Dance - Learn audition routine and review technique. Cuts will be made following this clinic.	106016-01
Tues Aug 20	6:00P-8:00P	Competition Poms - Learn the audition routine and technique.	106016-03
Wed Aug 21	6:00P-8:00P	Assess choreography retention and technique. Cuts will be made following this clinic and the New PHPD Star Studio Competition Team will be announced and invited to our Competition Boot Camp Saturday.	
Sat Aug 24	10:00A-2:00P	Dance Team Boot Camp - choreography for the large group routine, team bonding and games.	
Sat Aug 24	12:00P-4:00P	Pom Team Boot Camp - Begin choreography for the group routine, team bonding and games!	

SUMMER DANCE 2024

Dance Classes Begin June 18 (7 weeks)

****No Class July 3 & 4***

CLASS DESCRIPTIONS

Ballet & Tap

This class offers a chance for young dancers to be introduced to creative movement and new friendships! Here we will learn room directions, basic motor and coordination skills, and classroom cooperation. Ballet & Tap shoes required.

Competition Conditioning

NEW & PAST DANCERS WELCOME! Interested in trying out for our competition dance teams? Register for the Competition Conditioning classes and train with the coaches. This class will focus on core strength, technique (turns, flexibility, leaps and kicks), memory retention, and learning short combos of different dance styles including; Hip Hop, Jazz, Lyrical, and Contemporary. Signing up for the competition conditioning classes is a great way to meet the coaches, current dancers, and prepare for try-outs.

Contemporary

Contemporary combines elements of jazz, lyrical, modern, and ballet in an expressive style of dance that explores the versatility of movement through exercises and improvisation. Required attire: leotard or tank top with dance shorts or leggings and bare feet. May use ballet or jazz shoes.

Hip Hop

This class will expand on the fundamentals of Hip Hop and movements. Jazz shoes required.

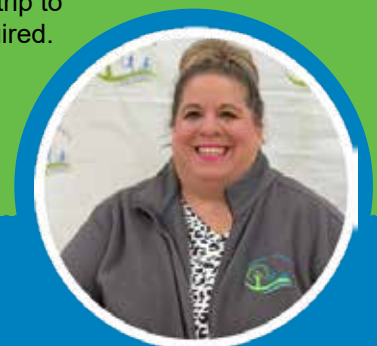
Poms

Dancers will learn beginning pom fundamentals and a basic routine. This class is great for promoting coordination and self-esteem. Jazz shoes required.

Princess Ballet

Join us for this fun introduction to Ballet where we will learn basic ballet steps. Put on your finest princess wear or your favorite Tutu and join us for a trip to fantasyland! Ballet shoes required.

For more information
Contact Marci Glinski | mglinski@phparks.org | 847.666.4875



SOCIAL SQUARE DANCE (SSD) WORKSHOPS

Led by caller John Harden, these workshops are designed for square dancers who have completed lessons at the SSD level. The focus will be on reviewing calls already learned and on challenging dancers with variations on those calls, such as extended applications. The sessions promise to be both fun and interesting.

Location Gary Morava Recreation Center

Tu June 4-Aug 20 7:00P-8:45P \$8 person at the door only Age 18+

PLUS LEVEL SQUARE DANCE WORKSHOPS

These workshops are designed for square dancers who have completed lessons at the Plus level. The focus will be on reviewing calls already learned and on challenging dancers with variations on those calls, such as extended applications. The workshops will be held twice a month (June 6 & 20, July 11 & 25, August 8 & 22).

Location Gary Morava Recreation Center

Th June 6-Aug 22 7:00P-8:45P \$8 person at the door only Age 18+



CREATE YOUR OWN CLASS

Busy with other activities or looking for a class that fits YOU? Pick a day & genre and let's make it happen. This newly created class can also be a solo, duet, trio or larger! Grab a friend or two and **LET'S DANCE!!**

Please call Marci Glinski at 847-666-4875 for more details.

Monday (4 Week Dance Intensive July 22- Aug 12) – Ms. Katie

6:00P–8:00P	Competition Conditioning	Ages 6+	\$79	106025-02
-------------	--------------------------	---------	------	-----------

Tuesday

6:00P-6:45P	Hip Hop	Ages 8+	\$79	106004-01
-------------	---------	---------	------	-----------

6:45P-7:30P	Contemporary	Ages 8+	\$79	106013-01
-------------	--------------	---------	------	-----------

7:30P-8:15P	Tap	Ages 8+	\$79	106002-02
-------------	-----	---------	------	-----------

Wednesday

6:00P–6:45P	Ballet & Tap	Ages 3-6	\$79	106003-03
-------------	--------------	----------	------	-----------

6:45P–7:30P	Hip Hop	Ages 3-6	\$79	106004-02
-------------	---------	----------	------	-----------

Thursday

5:00P-5:45P	Hip Hop	Ages 5-7	\$79	106004-03
-------------	---------	----------	------	-----------

5:45P-6:30P	Poms	Ages 5-7	\$79	106007-03
-------------	------	----------	------	-----------

6:30P-7:15P	Ballet	Ages 5-7	\$79	106001-07
-------------	--------	----------	------	-----------

7:15P-8:00P	Tap	Ages 5-7	\$79	106002-03
-------------	-----	----------	------	-----------

Saturday

10:00A-10:30A	Princess Ballet	Ages 2 ½-4	\$69	106001-06
---------------	-----------------	------------	------	-----------

10:30A-11:15A	Ballet & Tap	Ages 3-6	\$79	106003-02
---------------	--------------	----------	------	-----------

11:15A–12:00P	Hip Hop	Ages 3-6	\$79	106004-04
---------------	---------	----------	------	-----------

This league is a co-op with River Trails Park District. Learn the fundamentals while having fun and learning skills in a non-competitive environment. Games are played in a 4 vs 4 to 7 vs 7 formats with goalies and played on a smaller field. Age groups may be combined if needed. Before your child may play, there's a PAYS certification that needs to be completed. All games will take place at Indian Grove Soccer Fields; each team will practice 1 day a week for an hour. Practices start the week of August 26. Volunteer coaches are needed; please indicate at the time of registration. Players should bring their own soccer ball to practice. Jerseys are \$19 and can be purchased at the Gary Morava Recreation Center.

**REGISTRATION BEGINS
JUNE 1ST**

**Registration deadline is
August 17, 2024**

Please note, this registration covers both the Fall 2024 and Spring 2025 seasons. If you wish to opt out for the Spring season please contact the park district prior to the spring season.

PROSPECT HEIGHTS PARK DISTRICT
LITTLE KICKERS *fall & spring*
SOCCER LEAGUE

REGISTRATION DEADLINE: AUGUST 17

**SEPTEMBER 7-
OCTOBER 26
SATURDAY
9AM-2PM
R \$140/NR \$160**

LEAGUE IS A CO-OP WITH RIVER TRAILS PARK DISTRICT
LOCATION: RIVER TRAIL PARK DISTRICT

GRADE	CODE
Pre K	107005-01
K	107005-02
1st	107005-03
2nd	107005-04
3rd	107005-05
4th	107005-06
5th	107005-07

**REGISTER AT
PHPARKS.ORG**

110 W. CAMP McDONALD ROAD, PROSPECT HEIGHTS, IL 60070
847.394.2848 | PHPARKS.ORG

TAE KWON DO BEGINNER

This learn at your own pace class will teach hand and foot techniques in a safe and well supervised setting. This class will help improve concentration, self-esteem, coordination skills, all while incorporating general physical fitness activities. Please come to the first class in loose-fitting clothes.

**Location Gary Morava Recreation Center
Times 6:00P-7:00P
Age 5-18**

Tu July 9-Sept 24 \$110 107001-02

TAE KWON DO INTERMEDIATE

This class is designed for the slightly more advanced martial arts enthusiast. Participants will learn to improve their overall coordination, power of concentration, balance, physical, mental discipline, all while incorporating general physical fitness activities.

**Location Gary Morava Recreation Center
Times 7:00P-8:00P
Age 5-18**

Tu July 9-Sept 24 \$110 107002-02

YOUTH ATHLETICS

PROSPECT HEIGHTS PARK DISTRICT

SPORTS SKILLS CAMP

Location Country Gardens Park
901 N. Schoenbeck Road

>> HOT SHOT SPORTS

M-F | 9:00A-12:00P
R \$150 NR \$160

- Improve individual skills
- Learn how to do sport specific skills in a fun setting with awesome coaches

Soccer

June 3-7 | 111200-01
July 15-19 | 111200-06

Basketball

June 10-14 | 111200-02
July 22-26 | 111200-07

Baseball

June 17-21 | 111200-03

Tennis

June 24-28 | 111200-04
August 5-9 | 111200-09

Flag Football

July 8-12 | 111200-05
July 29-August 2 | 111200-08

REGISTER AT **PHPARKS.ORG**

LIL DRIBBLERS

The Lil' Dribblers Basketball program introduces children to the game of basketball in a safe, fun and exciting environment. Our curriculum uses age-appropriate activities and games specifically designed to increase balance, body awareness, motor skills, hand eye coordination, listening skills and the ability to follow directions. Through engaging exercises and interactive play, your child will develop fundamental basketball skills while having a blast in a supportive environment.

Location Gary Morava Recreation Center
Times 4:15P-5:00P
Age 3-5

M June 10-July 29 \$120 107365-01

BASKETBALL CLINIC 101

Develop early basketball skills such as shooting, dribbling, and passing, along with the basic rules of the game. All instruction is game/drill oriented with mini games and scrimmages played every week. This class is for the basketball beginner looking to understand the game, learn new skills, and have fun!

Location Gary Morava Recreation Center
Times 5:00P-6:00P
Age 6-8

M June 10-July 29 \$120 107363-01

BASKETBALL CLINIC 201

Players begin to develop more advanced skills such as various guard/post techniques, setting screens, moving without the ball, and offensive spacing. Defensive instruction includes man-to-man, denying the ball, help-line and boxing out. Players spend time developing their shot using proper mechanics to be effective further from the basket. Scrimmages are played every week.

Location Gary Morava Recreation Center
Times 6:00P-7:00P
Age 9-12

M June 10-July 29
\$120
107367-01



For more information
Contact Pan Zervas | pzervas@phparks.org | 847.394.6376

YOUTH ATHLETICS | HOT SHOT SPORTS

PEE WEE SOCCER

Let your child's early soccer experience be a great one. The younger player develops their soccer skills and gains confidence, coordination, motor skills and communication. The program uses age-appropriate drills and exercises to teach players kicking, ball control, dribbling, shooting and more.

Location Eisenhower Elementary School Field

Times 4:15P-5:00P

Age 3-5

Tu June 11-July 30 \$120 107404-04

SOCCER SKILLS CLINIC 101

In the next stage of their progression, players increase their confidence and speed in an up-tempo game like atmosphere. The clinic's specific technique training involves strength and placement shooting, landing on the shooting foot, precision passing, settling the ball with various body parts and taking the fundamentals to the next level and starting to learn skill maneuvers.

Location Eisenhower Elementary School Field

Times 5:00P-6:00P

Age 6-8

Tu June 11-July 30 \$120 107405-01

SOCCER SKILLS CLINIC 201

In the next stage of their progression, players increase their playing stamina and speed in an up-tempo game like atmosphere. The clinic's specific technique training involves strength and placement shooting, landing on the shooting foot, precision passing, settling the ball with various body parts and advanced fundamentals and skill maneuvers. Most importantly, players are taught game concepts that will improve their decision-making and overall game.

Location Eisenhower Elementary School Field

Times 6:00P-7:00P

Age 9-12

Tu June 11-July 30 \$120 107506-03

SPORTS AND MORE

Children are introduced to the fundamentals of sports including basketball, floor hockey, football, kickball, soccer, t-ball and other sports and group games. The program provides an opportunity for each child to develop motor skills and nurture his/her growth socially and emotionally through teamwork and good sportsmanship.

Location Eisenhower Elementary School Field

Times 4:15P-5:00P

Age 3-5

***No Class July 3**

W June 12-July 31* \$105 107700-01

TBALL SKILLS CLINIC

This introductory T-ball program is perfect for a child who wants to have fun, make new friends and be introduced to baseball. Participants enjoy learning the skills needed to play baseball including offense and defense, as well as the rules and philosophies of the game. The program stresses teamwork over competition. All you need to bring is a glove.

Location Eisenhower Elementary School Field

Times 5:00P-5:45P

Age 4-6

***No Class July 3**

W June 12-July 31* \$105 107401-01

JR FLAG FOOTBALL

Come join in on the fun and start playing the nation's most loved game! Players are introduced to stance, receiving, rushing, blocking and defense. Each week ends with a scrimmage encouraging teamwork and sportsmanship. Players always get to play either receiver or running back each week. Games focus on fundamentals and field concepts, as well as positions and mechanics. All equipment provided.

Location Eisenhower Elementary School Field

Times 5:45P-6:45P

Age 7-9

***No Class July 3**

W June 12-July 31* \$105 107407-01

FUN WITH TENNIS

This class introduces children to the early fundamentals of tennis. Using age-appropriate drills and games; participants learn basic strokes, grip and early tennis skills. All activities develop gross motor skills, coordination, judgment and proper mechanics. Tennis rackets will be provided.

Location Lions Park Tennis Courts

***No Class July 4**

Age 4-6

Th June 13-Aug 1* 4:15P-5:00P \$105 107400-01

Age 7-9

Th June 13-Aug 1* 5:00P-5:45P \$105 107400-02

NERF ELITE BATTLE

Each week we will play many different Nerf Elite Battle games, including team play, duos and an all-out-battle. Come experience this classic basement game in an arena style team game. All Nerf guns, ammo and eye protection will be provided. Participants may bring their own equipment.

Location Lions Park Tennis Courts

Times 6:00P-7:00P

Age 8-12

***No Class July 4**

Th June 13-Aug 1* \$105 107702-02



OBSTACLE COURSE FUN

Lil' Ninjas focus on developing coordination and strength through balancing, hanging, jumping, climbing, and running. Self-confidence and teamwork are instilled in a safe and positive environment.

Location Ultimate Ninjas North Shore
3054 N Lake Terrace, Glenview, IL
Age 3-5

W	May 8-June 12	6:00P-6:50P	R \$150 NR \$170	107805-01
Th	May 9-June 13	6:00P-6:50P	R \$150 NR \$170	107805-02
Sa	May 4-June 8	9:00A-9:50A	R \$150 NR \$170	107805-03
Sa	May 4-June 8	10:00A-10:50A	R \$150 NR \$170	107805-04
Su	May 5-June 9	9:00A-9:50A	R \$150 NR \$170	107805-05
Su	May 5-June 9	10:00A-10:50A	R \$150 NR \$170	107805-06
W	July 10-Aug 14	6:00P-6:50P	R \$150 NR \$170	107805-07
Th	July 11-Aug 15	6:00P-6:50P	R \$150 NR \$170	107805-08
Sa	July 13-Aug 17	9:00A-9:50A	R \$150 NR \$170	107805-09
Sa	July 13-Aug 17	10:00A-10:50A	R \$150 NR \$170	107805-10
Su	July 14-Aug 18	9:00A-9:50A	R \$150 NR \$170	107805-11
Su	July 14-Aug 18	10:00A-10:50A	R \$150 NR \$170	107805-12

BEGINNER OBSTACLE COURSE RACING

Tackle obstacles just like on American Ninja Warrior! Obstacle courses build strength, endurance, and confidence. Classes include a warm-up, obstacle coaching/technique, endurance, and free time. Participants learn how to approach new challenges safely, while having fun and exploring movement. Instructors set challenges for students, who gradually develop solid fundamental skills.

Location Ultimate Ninjas North Shore
3054 N Lake Terrace, Glenview, IL
Age 6-12

W	May 8-June 12	6:00P-6:50P	R \$150 NR \$170	107806-01
Th	May 9-June 13	6:00P-6:50P	R \$150 NR \$170	107806-02
Sa	May 4-June 8	9:00A-9:50A	R \$150 NR \$170	107806-03
Sa	May 4-June 8	10:00A-10:50A	R \$150 NR \$170	107806-04
Su	May 5-June 9	9:00A-9:50A	R \$150 NR \$170	107806-05
Su	May 5-June 9	10:00A-10:50A	R \$150 NR \$170	107806-06
W	July 10-Aug 14	6:00P-6:50P	R \$150 NR \$170	107806-07
Th	July 11-Aug 15	6:00P-6:50P	R \$150 NR \$170	107806-08
Sa	July 13-Aug 17	9:00A-9:50A	R \$150 NR \$170	107806-09
Sa	July 13-Aug 17	10:00A-10:50A	R \$150 NR \$170	107806-10
Su	July 14-Aug 18	9:00A-9:50A	R \$150 NR \$170	107806-11
Su	July 14-Aug 18	10:00A-10:50A	R \$150 NR \$170	107806-12



Join us for our inaugural Garden Dash 2k/4k at Country Gardens Park with proceeds supporting the Prospect Heights Police Department Helping Hands Fund. The Helping Hands Fund has been established to offer financial support to Prospect Heights residents who have been victims of crimes such as domestic abuse, child abuse, fire victims, and other tragedies.

Register for either distance and the event is for runners or walkers of all ages. Each registrant will receive a t-shirt, guaranteed if you register by June 3, and goody bag. Bonus – all participants under 21 years can receive 1 popcorn ticket or over 21 years can receive 1 beer ticket for our Block Party on Saturday, June 22. This event is not chip timed.

Registration closes on Monday, June 10.

When: Saturday, June 15, 2024
 Check-in begins at 9:45A and the race begins at 10:30A

Where: Country Gardens Park

Fee: \$15/person

Race Options:
 2k Recreational
 2k Competitive
 4k Recreational
 4k Competitive

All Ages
 107789-01



SUPPORTING THE PROSPECT HEIGHTS POLICE DEPARTMENT HELPING HANDS FUND

YOUTH | ADULT ATHLETICS



OLD ORCHARD COUNTRY CLUB

A Prospect Heights Park District Property

Old Orchard Country Club was acquired by the Prospect Heights Park District in 1999. We offer a country club experience to the general public with our personal service, fast greens and excellent golf course conditions that rival private clubs. One of the best public clubs in the Chicagoland area and the northwest suburbs.

Old Orchard offers stunning event spaces and exquisite cuisine, this beautiful venue is the perfect place to celebrate any event from weddings, golf outings, memorial celebrations, showers and all other special occasions. Recently renovated and available to host up to 300 guests. Whether you're are planning an intimate celebration or large elaborate affair, Old Orchard is a must see! Our personal staff will make any vision come to life.

For more information

Golf Contact Marc Heidkamp
mheidkamp@phparks.org
847.666.4853

Banquets Contact Pam Nauert
pnauert@phparks.org
224.248.8708

APRIL TRAINING CAMP

Watch your child develop their physical abilities and mental focus while having fun learning exciting new skills that boost their overall confidence. This class will start the summer development as soon as the weather breaks.

Location Old Orchard Country Club

Tu,Th April 11-25 4:15P-5:15P \$180 per person

Tu,Th April 11-25 5:30P-6:30P \$180 per person

SPRING JUNIOR GOLF CAMP

This is a great opportunity for the junior golfer looking to get a head start on competition. PGA Professional Doug Brazeau will give the lessons and each student's progress will be monitored in a structured group lesson format. Half of the instruction will be held on the course! We will be offering two classes based on the student's ability level, they are as follows:

Location Old Orchard Country Club

Intermediate Class

Times 5:00P-6:00P

Age 7-11 | Size Split 20 Students | \$180

Session 1 May 7 Chipping & Putting Clinic

Session 2 May 9 Driving Range

Session 3 May 14 Playing Lesson

Session 4 May 16 Driving Range

Session 5 May 21 Playing Competition

Advanced Class

Times 6:15P-7:15P

Age 12-16 | Size Split 20 Students | \$180

Session 1 May 7 Chipping & Putting Clinic

Session 2 May 9 Driving Range

Session 3 May 14 Playing Lesson

Session 4 May 16 Driving Range

Session 5 May 21 Playing Competition



REGISTER FOR GOLF PROGRAMS AT THE ONLINE STORE AT OLDORCHARDCC.COM

For more information
Contact Doug Brazeau | dbrazeau@phparks.org | 847.666.4854



GOLF ACADEMY

SPRING JUNIOR LEAGUE

The league will be separated into four teams; much like the Summer Challenge League. Teams will compete each week against each other using various formats of play. Besides competition, this league will stress on game improvement to make each student a more complete player. Areas of focus will be set-up, pre-shot routine, short-game, rules, etiquette, and full swing fundamentals. If you want to improve your game and have valuable on-course competitions, then sign up today.

On-course competition Prizes
10 rounds on the course Awards Dinner Ceremony
Practice time on the range Driving Range Balls included
Team Gear

Location Old Orchard Country Club
Times 4:45P-5:45P
Age 8-13 | Max 40 Participants | \$295

Wed April 3 Tryouts

Wed April 10, 17, 24

Wed May 1

**Wed May 5 Parent/Child Scramble Come
anytime between 4:00P-6:00P**

Wed May 8

Tues May 22

Wed May 28 Rain Make-up

Wed May 29 Awards Night

SUMMER CHALLENGE GOLF LEAGUE

Come and try out for this fun league and learn even more about this great game of golf. Our goal is to provide a format of play that is coached for fun and at the same time teach youngsters rules and etiquette. This league is excellent preparation for high school golf. Team players will be required to have a junior set of clubs. Due to the availability of the golf course, we are forced to a 50-person league limit, but we will be willing to sign up substitutes for each team. Park district residents will have priority in signing up.

Tryouts: June 4 at 5:00P

Tentative Dates:

June 11, 12, 18, 19, 25, 30 (Parent/Child Scramble, come anytime between 4:30P-6:00P)

July 2, 9, 10, 16, 17, 23, 24, 30 (Rain Make-up) 31, 5P Golf then followed by Awards Ceremony (parents are welcome to join at 6:30P, send your favorite dessert)

Max: 50, residents have first priority.

Location Old Orchard Country Club
Times 5:00P-7:00P
Age 7-14

Tu,W June 4-July 31 \$375

SPRING JUNIOR LEAGUE - ADVANCED

For the golfers already playing tournament and competitive golf or aspiring to play tournament golf. The purpose of this league is to give you the opportunity to play in a competitive atmosphere and start your season off competing.

On-course competition Prizes
10 rounds on the course Awards Dinner Ceremony
Practice time on the range Driving Range Balls included
Team Gear

Location Old Orchard Country Club
Times 4:00P-6:45P
Age 11-16 | Max 30 Participants | \$325

Wed April 3 Tryouts

Wed April 10, 17, 24

**Wed April 28 Parent/Child Scramble Come
anytime between 3:30P-6:00P**

Wed May 1, 8, 15, 22

Wed May 28 Rain Make-up

Wed May 29 Awards Night

SUMMER ADVANCED CHALLENGE LEAGUE

The purpose of this league is to give you an opportunity to play golf in a competitive atmosphere and to prepare you for high school golf. There is a limit of 30 players. Matches will be at 7:00A on Mondays and Wednesdays. The fee includes golf, warm up balls before or after, team hat and awards ceremony.

Try Outs: June 5 at 5:00P

Tentative Dates:

June 10, 12, 17, 19, 24, 26

July 1, 8, 10, 14 (Parent/Child Scramble, come between 4:30P-6:00P), 17, 22, 24, 29 (Rain Make-up Date) 31 (4:30P Golf then Awards Ceremony, parents are welcome to join at 6:30P, bring your favorite dessert) Max 30

Location Old Orchard Country Club
Times 6:00P-7:00P
Age 18+

M,W June 5-July 31 \$375

ADULT GOLF CLINIC

This class is for golfers ready for more detailed instruction and golfers looking to shave a few strokes off their handicap. Full swing and short game will be the focus. We will concentrate on swing flaws and short game techniques to improve your ability to score. Classes will be held on course and at the driving range. Driving range balls included.

Location Old Orchard Country Club
Times 6:00P-7:00P
Age 18+

Tu,Th July 16-30 \$195

OLD ORCHARD COUNTRY CLUB GOLF ACADEMY - LEVEL 1 CLINIC

If your child likes to golf or is merely curious about the game, sign him/her up for this fabulous instructional five-day clinic. They will learn correct swing fundamentals, rules, golf etiquette and get a set of clubs! This introductory course has helped thousands of kids learn the game of golf. All children who attended the clinic last year will be able to sign up again for \$130 (does not include the golf clubs). Classes are limited. First time fee includes a starter set of golf clubs and golf bag.

Location Old Orchard Country Club
Age 6-12

M-F	June 10-14	8:30A-9:30A	\$225
M-F	June 10-14	10:00A-11:00A	\$225
M-F	June 10-14	12:30P-1:30P	\$225
M-F	June 17-21	8:30A-9:30A	\$225
M-F	June 17-21	10:00A-11:00A	\$225

OLD ORCHARD COUNTRY CLUB GOLF ACADEMY - LEVEL 2 CLINIC

After the completion of Level 1 Clinic youngsters will be given a chance to advance to the next level to learn more specific golf fundamentals. Level 2 Training Program gives youngsters practical experience on the golf course using a fun format that stresses the importance of learning good fundamentals through playing games and competitions. Kids will be separated by age and ability. This class can be taken while enrolled in one of the leagues.

Location Old Orchard Country Club
Age 6-14

Tu,Th	July 9-25	8:30A-10:00A	\$185
Tu,Th	July 6-25	11:00A-12:30A	\$185



SUMMER TRAVEL CHALLENGE LEAGUE

Participants in this league will have an opportunity to represent Old Orchard in a competitive atmosphere on this team that will compete against three other neighboring park districts. The formats will vary, from playing your own ball to scrambles to skills challenges. To be eligible participants must have completed one of our other programs and are expected to represent Old Orchard in sportsmanship, etiquette and character. This will be limited to the first 15 players, after tryouts. The fee includes golf, 5 extra range tokens, team hat and awards ceremony. A schedule of matches and practices will be provided once you are placed on a team.

Try Outs: June 5 at 5:00P

Matches: Wednesdays at 1:00P

Tentative Dates:

June 12, 19, 26

July 10, 17, 24

Practices: Mondays at 7:00A

Tentative dates:

June 10, 17, 24

July 1, 8, 14 (Parent/Child Scramble - Come anytime between 4:30P-6:00P), 22, 29 (Rain Make-up Date), 31 (4:30PM Golf then Awards Ceremony - parents are welcome to join at 6:30P; bring your favorite dessert).

Location Old Orchard Country Club
Age 10-13

M,W June 5-July 31 7:00A-9:00A \$375

SUMMER HIGH SCHOOL LEAGUE

The purpose of this league is to play more golf! This is a great way to get experience in a competitive atmosphere and to prepare you for the high school season. Don't wait until August to prepare for the high school golf team. All matches will be at 7:00A on Tuesdays and Thursdays. The fee includes golf, 5 extra range tokens, team hat and awards ceremony. A schedule of matches and practices will be provided once you are placed on a team.

Try Outs: June 5 at 4:30P

Tentative Dates:

June 11, 13, 18, 20, 25, 27

July 2, 9, 11, 16, 18, 23, 25 (Rain Makeup Date), 31 (4:30P Golf, then Awards Ceremony; send your favorite dessert).

Location Old Orchard Country Club
Age 13-18 or incoming Freshmen through Seniors

Tu,Th June 7-Aug 2 7:00A-9:30A \$375

OLD ORCHARD CHAMPIONS TOURNAMENT

This tournament offers a competitive field for all levels of golfers. Register now for an opportunity to compete against area golfers. You will be notified of your tee time the weekend before the tournament. Range balls, golf, lunch and medals are included.

Location Old Orchard Country Club
Age 10-11, 12-13, 14-15, 16-18
Boys and Girls Divisions

M July 15 Tee Times between 8:00A-12:00P \$40

Weddings

AT OLD ORCHARD COUNTRY CLUB

Starting the wedding planning process?
Old Orchard Country Club's
professional staff is
here to help!



 **OLD ORCHARD
COUNTRY CLUB**
A Prospect Heights Park District Property

Contact Our Event Coordinators
at 847.224.8708 or
Banquets@phparks.org

oldorchardcc.com | 700 W Rand Rd Mt Prospect, IL 60056

PROSPECT HEIGHTS PARK DISTRICT PRESENTS
**GOLDEN YEARS
 WELLNESS EXPO**

THURS, OCTOBER 3 | 10:00A-2:00P

110 W. Camp McDonald Road, Prospect Heights

Interested in becoming a Vendor? Contact Marci Glinski for more details.



Sponsored by
Prospect Heights Park District & Oak Street Health



SPRING BIRD WALKS

It's the start of the spring migrations! Anyone who has been around the Slough this last year has noticed a big increase in the number and types of birds. The changes we have made in the habitat are changing the inhabitants. Now that the spring migrations are starting, we invite you to join our new walk leader, Cyndi Lubecke. A long time birder and local resident, Cyndi will be taking over for Mary Lou Mellon, our grand leader for 9 years, to lead us around the Slough, experiencing the wonder of birds and learning how to spot birds and identify them. Learn where to look for birds in your community and how to adjust binoculars for your eyes. Children welcome with adults. Please bring binoculars if you have them and dress for the weather. This is a FREE class, but you must register.

Location Izaak Walton Park

Sa May 4 8:00A-10:00A FREE 411024-03
 Sa May 18 8:00A-10:00A FREE 411024-04



For more information
 Contact Marci Glinski | mglinski@phparks.org | 847.666.4875



ACTIVE ADULTS

ALL PARTIES ARE 1.5 HOURS

SPORTS PARTY

Basketball, soccer, dodge ball or flag football and more. (Choose one)
\$15 per person

ULTIMATE BIRTHDAY BASH

Old-fashioned party games
\$15 per person

NERF BATTLE PARTY

Gear up and challenge your friends for a Nerf Battle! Includes one hour gym & 30 minute party room rental, Nerf Coach and all the necessary Nerf Equipment to have a Birthday Battle. (Ages 7 & up)
\$24 per child

MINI NINJA WARRIOR PARTY

Leap, hop, skip, run your way through obstacles and put your Ninja skills to the test. This fun, movement based class will challenge your Ninja to maneuver over and under objects. Includes one hour gym & 30 minute party room rental, Ninja Coach and equipment. (Ages 4-8)
\$24 per child

DANCE PARTY

Dance along with the birthday child's favorite Pop Star - Swifty, Boy Bands, 80's Throwback or you choose!
\$15 per person

NEW



We are offering a variety of party packages this year for your fun and enjoyment! Any of our birthday parties can also be used as a scout troop outing or to earn your next badge. A minimum of 10 children are required for all parties. Enjoy as we take care of your party needs from start to finish. You are welcome to bring in your own food and cake! If you choose we are happy to provide pizza, hot dogs, cupcakes or cake, ice cream, drinks or goody bags to complete your party at an additional fee. Please contact Marci Glinski for more information.



CAKE DECORATING WITH GLORIA

Each child will learn to decorate a cake using different tools and techniques. Each child will bring home a decorated cake in a box as their party favor.
\$24 per person

STUFF & FLUFF PARTY

Choose your favorite FURRY FRIEND to bring to life. Many to choose from! Includes fiberfill stuffing, rainbow wish star, birth certificate, and take-home bag.
\$24 per person

BIRTHDAY PARTY INFORMATION



Jazzercise® is the original dance party workout. Blending dance with Pilates, yoga, kickboxing and strength training, one 55-minute session can burn up to 800 calories. The results? Long, lean muscles and an undeniable mood boost. Registrations taken at class. New students should arrive a minimum of 10 minutes prior to the first class.

Age 16 & Older
 Location Gary Morava Recreation Center, in person and virtual online classes

**MONTHLY FEE:
 \$69 UNLIMITED CLASSES**

CLASS SCHEDULE

Monday 9:00A & 5:40P
 Tuesday 9:30A & 5:40P
 Wednesday 9:00A & 5:40P
 Thursday 9:30A & 5:40P
 Friday 9:00A
 Saturday & Sunday 8:30A



SilverSneakers

The Prospect Heights Park District is a SilverSneaker location. Find out if your health plan or Medicare supplement carrier offers SilverSneakers. Bring your 16-digit health ID card for a FREE fitness center membership.

PRIME

Designed specifically with you in mind (ages 18-64), Prime was created to improve your well-being and lifestyle while helping you look and feel great. Prime includes a fitness center membership. This is a benefit offered by employers and/or your health plan. To find out if you are eligible, contact your employer. Bring in your 16-digit health ID card for a FREE fitness center membership.



Prospect Heights Park District is also a Renew Active location. Bring in your 10 digit access code for a FREE fitness membership. The program is available with select United Healthcare Medicare Advantage plans. Contact your employer for more details.

ADULT OPEN PLAY PICKLEBALL

Age 18 & up
 Location Gary Morava Recreation Center Gym

FEE \$3/day
 \$55 - 20 punch pass

Also included in SilverSneakers, Renew Active and one-year fitness membership

Dates	Days	Times	Level
10/02-03/29	M,W, F	9:00A-11:00A	Competitive
10/02-03/29	Tu,Th	9:00A-11:00A	Recreational



For more information
 Contact Pan Zervas | pzervas@phparks.org | 847.394.6376



FITNESS PROGRAMS

MARCH TO MEMORIAL DAY FITNESS CHALLENGE

Memorial Day is to remember those who have fallen in the line of duty. Those brave men and women spent countless hours on their feet in tons of different conditions to protect our country. This fitness challenge is just a small tribute to that. Find all the info for this challenge in the fitness center or on our website. This is a distance traveled challenge. You must have a current fitness membership to participate.

Location Gary Morava Recreation Center
April 22-May 27
613060-01



FITNESS CENTER MEMBERSHIP

Fitness Center memberships can be purchased at the Front Desk during regular hours at the Gary Morava Recreation Center.

PLEASE NOTE: Family memberships only apply to immediate family members residing in the same household. Proof of residency may be required. Must be 12 years & up to use fitness equipment in the Fitness Center. Youth ages 12-13 must be accompanied by a parent or guardian. No one under the age of 16 may use the sauna. Memberships cannot be transferred to another person.

FITNESS CENTER HOURS

Monday–Thursday	6:00A-9:00P
Friday	6:00A-6:00P
Saturday	8:00A-5:00P
Sunday	9:00A-5:00P

AVAILABLE EQUIPMENT

- Cardio Theater Entertainment System
- Precor Treadmills
- Precor Elliptical Machines
- Precor Recumbent Bikes
- Stationary Bikes
- Concept2 Rowers
- Rig
- Complete line of strength machines
- Full range of 5–60 lb. dumbbells, free weights, squat rack & cable crossover
- NuStep Sit Down Elliptical
- 5 - 45 lb. Bumper Plates
- 20 - 60 lb. EZ-Curl Bars

MEMBERSHIP RATES

Students - 12-23 years with school ID
Individual - 18-23 years with no school ID and 24-61
Senior - 62 years & up
Additional Family Members

FITNESS

Memberships Include:

Unlimited access to the fitness center, and access to open gym, racquetball court, and locker room. Members can take advantage of our cardio and strength machines, free weights, and balance/ resistance equipment. One Year Fitness Membership includes Open Play Pickleball from October - May.

RACQUETBALL & OPEN GYM

Memberships Includes:

Unlimited access to the racquetball court and open gym. Racquetball & Open Gym membership does not include Pickleball.

RACQUETBALL COURT PROCEDURES:

1. All players must scan their passes at the front desk or pay the daily fee prior to entering the court.
2. Players may reserve the court seven days ahead for one hour.
3. Court may be booked for one hour for each member. Call Front Desk at 847.394.2848 to book time.
4. Reservations are on the half hour (7:30A, 8:30A, 9:30A, etc.).

One Year Fitness Memberships	Resident	Non-Resident
Individual	\$175	\$200
Additional Family Member	\$100	\$120
Student/Senior	\$99	\$115
One Year Gym & Racquetball Memberships	Resident	Non-Resident
Individual	\$59	\$77
Student/Senior	\$39	\$43
Six Month Fitness Memberships	Resident	Non-Resident
Individual	\$125	\$150
Additional Family Member	\$75	\$85
Student/Senior	\$60	\$75
Three Month Fitness Memberships	Resident	Non-Resident
Individual	\$75	\$85
Additional Family Member	N/A	N/A
Student/Senior	\$40	\$50

DAILY FEES

Fitness Center	\$5 per person
Open Gym	\$3 per person
Racquetball Court	\$10 per person

FITNESS CENTER

LOOK AT WHAT YOU CAN RESERVE...

How about renting a room for your meeting, baby shower, or birthday party? The recreation center offers two large meeting rooms with kitchen facilities and is available for public and private use throughout the year. We also rent picnic pavilions, soccer fields, baseball fields, tennis courts and pickleball courts.

RENTAL PROCEDURES

Rentals are subject to Park District approval. The approval process may take up to 7 days, so please plan accordingly. Facility use is subject to availability and requests are granted based on appropriateness.

THE APPLICATION PROCESS IS AS FOLLOWS:

1. Applicant must complete and sign the Prospect Heights Park District Facility Rental Application form. The form is available online at phparks.org or paper copies at the Front Desk. You can return the form by emailing it to Rita Nebl at rnebl@phparks.org or return it to the Front Desk at the Gary Morava Recreation Center.
2. Upon approval of request, applicants will be notified, and a \$100 deposit may be required to secure the date.
3. Applicants must submit full payment of fees at least 7 days prior to the rental or by a date specified by staff.

NOTE: Prospect Heights Park District programs and activities have first priority.

TIME	ELM ROOM (MEETING ROOM 1) CAPACITY 115		PINE ROOM (MEETING ROOM 2) CAPACITY 98		FULL GYM CAPACITY 375		1/2 GYM CAPACITY 187		FITNESS STUDIO CAPACITY 42	
	R	NR	R	NR	R	NR	R	NR	R	NR
1 Hour	\$75	\$90	\$70	\$85	\$80	\$90	\$60	\$70	\$30	\$40
2 Hours	\$95	\$120	\$90	\$115	\$130	\$145	\$85	\$100	\$60	\$80
3 Hours	\$115	\$150	\$110	\$145	\$180	\$200	\$110	\$130	\$90	\$120
4 Hours	\$135	\$180	\$130	\$175	\$230	\$255	\$135	\$160	\$120	\$160
5 Hours	\$155	\$210	\$150	\$205	\$280	\$310	\$160	\$190	\$150	\$200
6 Hours	\$175	\$240	\$170	\$235	\$330	\$365	\$185	\$220	\$180	\$240
ADDITIONAL COSTS										
\$35	Oven/Stove Use									
\$60	After Hours - per hour									
\$50	Room Set Up									
\$100	Refundable Booking and Damage Deposit									
PICNIC PAVILION RENTALS										
R \$50/day	NR \$75/day	Lions Park, Country Gardens & Izaak Walton								
FIELD & COURT RENTALS										
R \$20/hour	NR \$30/hour	Country Gardens Soccer Field								
R \$50/hour	NR \$70/hour	Lions Park and McDonald Field Ballfields								
R \$6/hour	NR \$10/hour	Outdoor Tennis Courts and Pickleball Courts (Lions Park, Country GardensPark, Claire Lane Park)								



SCAN FOR
MORE
INFORMATION



FACILITY RENTAL INFORMATION



Scan for more info



B&W BAIRD & WARNER
Getting your home sold in today's market takes...

experience, knowledge & a proven track record.

Homes are selling, if you have the right broker.
I'm not just a real estate broker;
I'm also your neighbor!

Contact me for a complimentary market analysis today!

Karen Gatta, JD, CSC
Real Estate Broker
Baird & Warner
773.793.7627 cell
karen.gatta@bairdwarner.com
www.karengatta@bairdwarner.com



Become a 2024 Event Sponsor!
Contact us to customize a sponsorship package

January 15	Winter Carnival
February 9	Family Valentine Bingo & Pizza Night
March 15	Family Bingo & Pizza Night
March 22	Flashlight Egg Hunt
March 23	Bunny Home Visits
March 30	Spring Fling
March 30	Bunny Home Visits
April 5	Royal Family Ball
April 19	Family Bingo & Pizza Night
June 22	Prospect Heights Block Party
July 17	Tiki Family Night
August 6	National Night Out
September 20	Hometown Family Hoe Down
October 11	Loteria Family Night
October 19	Spookfest
November 9	PHPD Arts Showcase
December 13	Holly Jolly Gingerbread House Workshop
December 18 & 19	Holiday Trolley Express

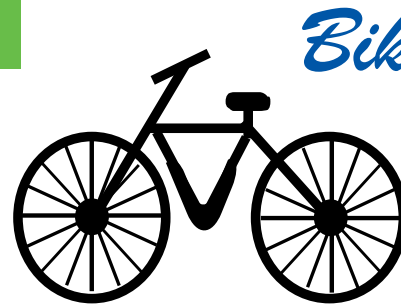


For more information
Contact Edlyn Castil | ecastil@phparks.org | 847.666.4864

ADVERTISING & SPONSORSHIP

Fun Facts!

- Did you know two bee hives were installed near the bridge between Country Gardens and Somerset Park as part of ComEd's pollinator project near the prairie? They are thriving by foraging nectar and pollen from the prairie plantings nearby!
- Visit the Nature Preserve in Lions Park where one Eagle Scout project, 49 volunteers and 224 hours of labor created the woodchip trail and steppingstone bridge over McDonald Creek.
- Have you tried the zipline playground equipment installed at School Street Park?
- Are you aware that Izaak Walton Park has two sections of boardwalk that connect several nature trails and an observation deck?
- Check out the StoryWalk® in Lions Park any day of the year! It's a project of the Prospect Heights Library and Park Districts. Stroll along the gravel path and read children's stories. Stories are changed quarterly.
- Wedgewood Park is currently being renovated with a ribbon cutting scheduled for the spring of 2024.

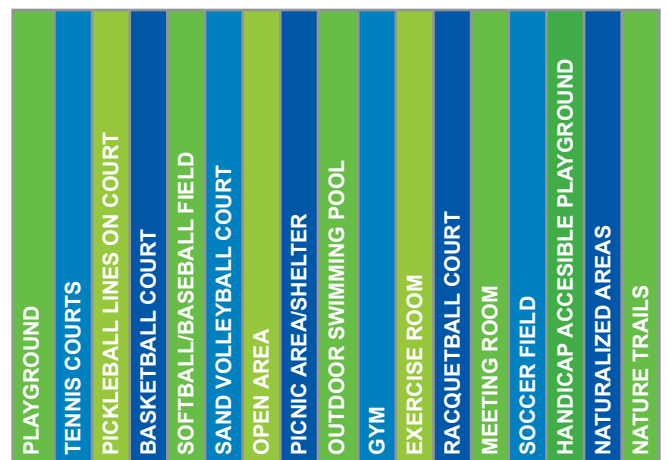


Bike Path

STARTS at Country Gardens Park on Schoenbeck Rd one block North of Palatine Rd
ENDS at the Prospect Heights Train Station at Camp McDonald Rd & Wolf Rd

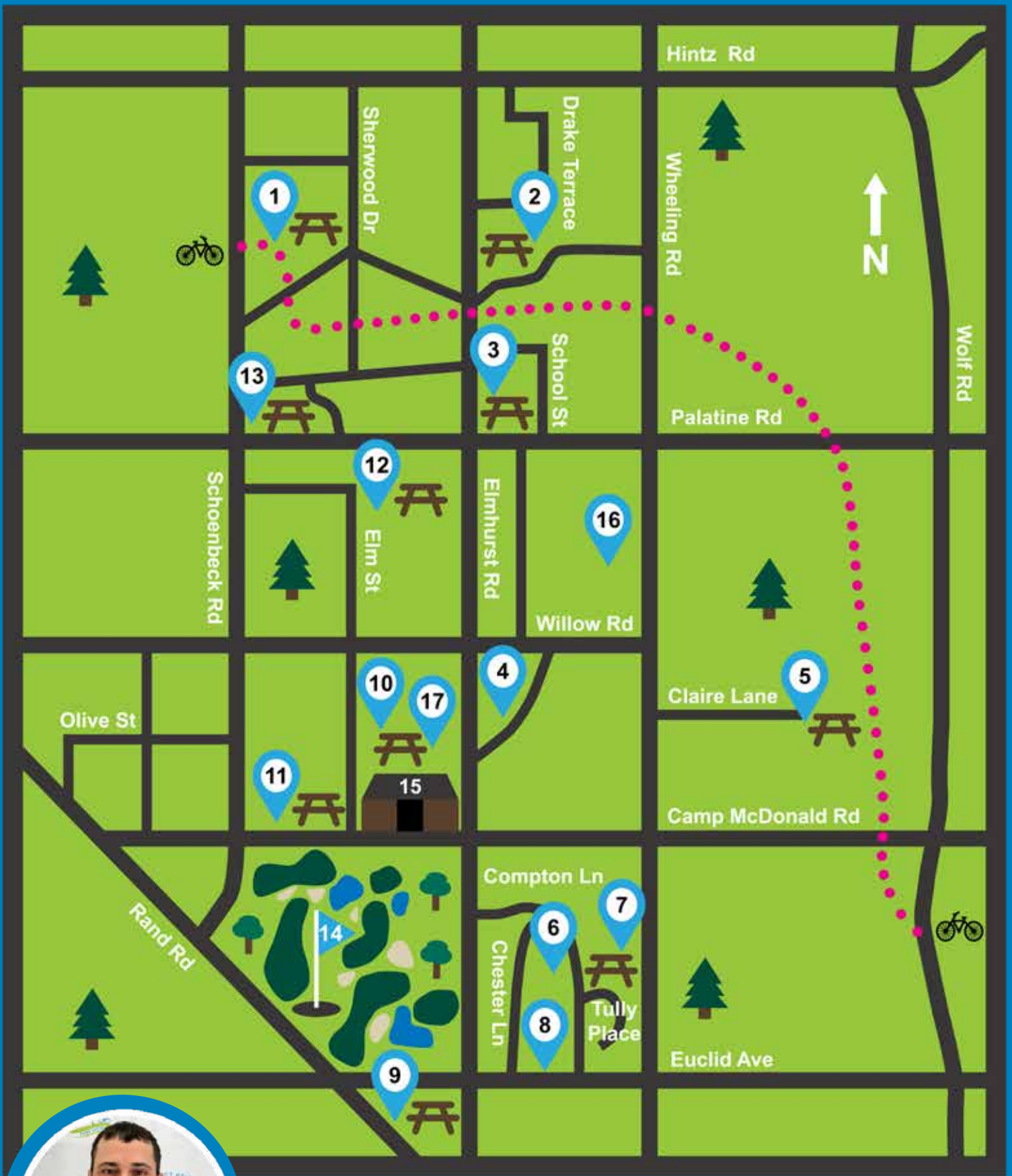
WHILE ON PARK DISTRICT PROPERTY...

- NO DRONES/MODEL AIRCRAFTS CAN BE FLOWN WITHOUT A PERMIT
- ALL DOGS MUST BE ON A LEASH



#	PARK	ADDRESS	ACRE
1	Country Gardens Park	901 N Schoenbeck Rd	9.0
2	John Muir Park	999 Oak Ave	4.5
3	School Street Park	808 School St	3.0
4	Izaak Walton Park	201 N Elmhurst Rd	4.0
5	Claire Lane Park	617 Claire Lane	.50
6	Jaycee Park	4 Compton Lane	1.0
7	Tully Park	212 Tully Place	2.0
8	Rosemary Roth Park	201 Chester Ln	.50
9	Wedgewood Park	5 W Oxford Place, Mt Prospect	.50
10	Lions Park	110 W Camp McDonald Rd	10.0
11	McDonald Field	110 W Camp McDonald Rd	1.3
12	Kiwanis Park	712 N Elm St	.67
13	Somerset Park	204 W Palatine Frontage	26.0
14	Old Orchard Country Club	700 W Rand Rd, Mt Prospect	100
15	Gary Morava Recreation Ctr.	110 W Camp McDonald Rd	
16	Walnut Woods	610 N Wheeling Rd	8.5
17	Nature Preserve	110 W Camp McDonald Rd	2.0

MAP & PARK AMENITIES



For more information
 Contact Mark Grassi | mgrassi@phparks.org | 847.666.4867

MAP & PARK AMENITIES

PROSPECT HEIGHTS PARK DISTRICT

Gary Morava Recreation Center
110 W. Camp McDonald Road
Prospect Heights, IL 60070
847.394.2848

PRE-SORT STD
U.S. POSTAGE
PAID
MOUNT PROSPECT, IL
PERMIT #45

*****ECRWSS
RESIDENTIAL CUSTOMER
LOCAL**



CELEBRATE WITH US

**HONORING THE PROSPECT HEIGHTS
LIONS CLUB 70TH ANNIVERSARY**

4:00 PM - 11:00 PM



**FOOD TRUCKS, BEER & WINE GARDEN
LIVE MUSIC ★ WHISKEY ROAD ★ BOY BAND NIGHT
FREE SWIM ★ COMMUNITY ORGANIZATIONS ★ PET PAGEANT
KIDS ZONE INFLATABLES & GAGA PIT ★ FREE BINGO
DANCE COMPETITION TEAM SHOWCASE
LIONS CLUB DUCK RACE FUNDRAISER**